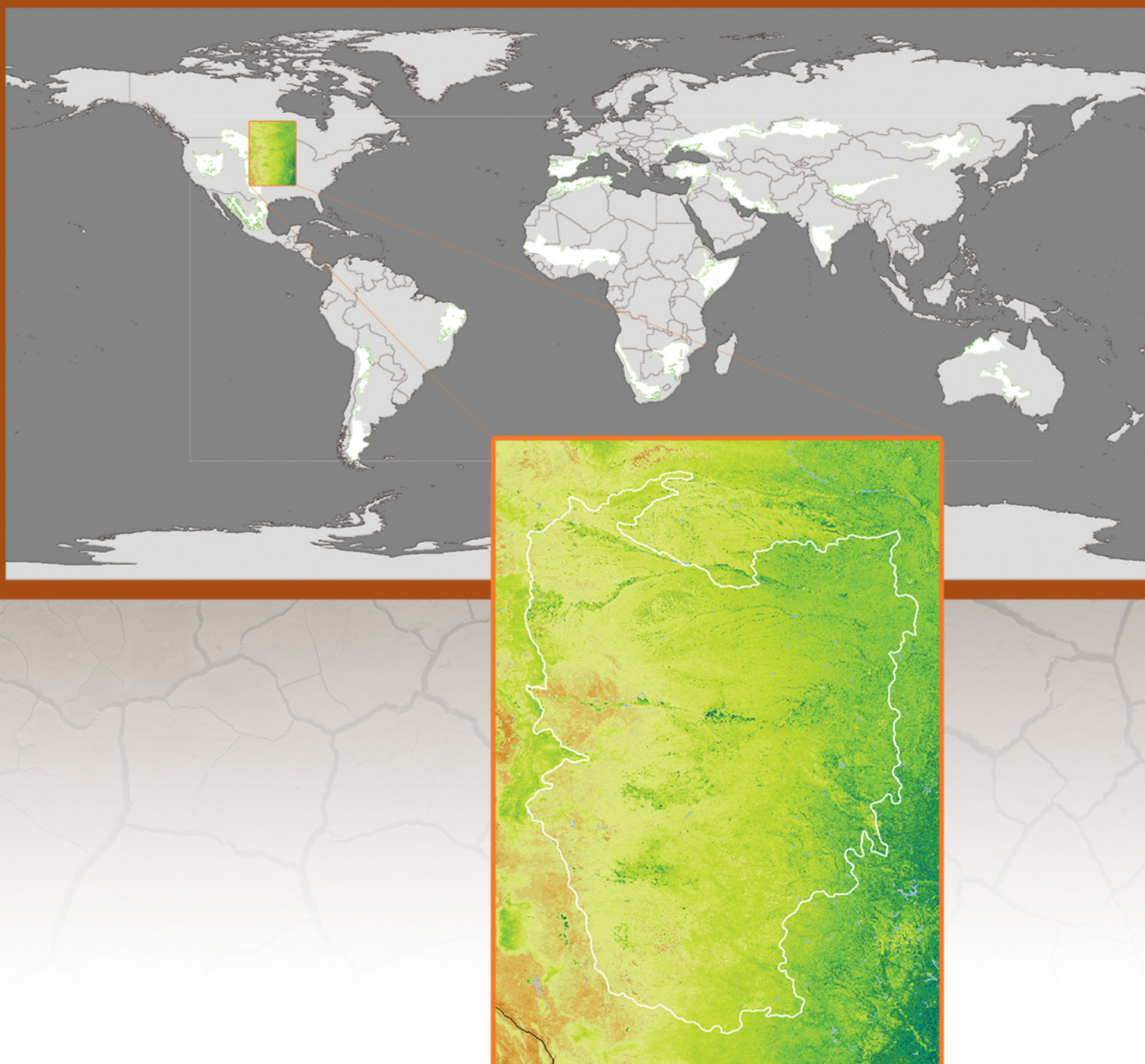


## → ESA DIVERSITY II - DRYLAND PRODUCTS

Booklet for Test Site 17 | Southern Central USA



All Drylands Booklets are available on **[www.diversity2.info](http://www.diversity2.info)**

Publisher	ESA Diversity II project
Editor	Ute Gangkofner (GeoVille, Austria)
Cover Design	ESA - EOGB (Earth Observation Graphic Bureau)
Copyright	© 2015 ESA Diversity II project

## **Acknowledgement**

This booklet as one of 22 in total presents dryland results of the ESA DUE DiversityII project, where we thank ESA for the project initiative and funding. The providers of the global meteorological and biophysical data sets are acknowledged and thanked for making the data available free of charge: the University of Maryland; Department of Geography for the NOAA GIMMS NDVI data, NASA for the TRMM rainfall data, NOAA for the GPCP precipitation data, and the TU Vienna for the CCI soil moisture data. We are grateful to users and addressees for their feedback, valuable information, and their contributions to the user meetings. The project results and their presentation in the booklets owe their existence to many persons, whose affiliations are presented on the back cover of the booklet. A special thank is owed to Bob Scholes and Graham v. Maltitz, who kindly contributed “desertification narratives” about site 12, Southern Africa West, and respectively site 21, Southern Africa East.

## **About the Booklet**

The booklets provide information about the vegetation condition of major dry regions of the world and how it developed during the first decade of this century as seen by ENVISAT MERIS. Focus is on vegetation productivity combined with detailed phenological analyses. The booklets present part of the developed indicators, which comprise status and trend/change information.

Chapter 1 gives a short introduction to the Diversity II project and the scope of the booklet.

Chapter 2 introduces the test site with a condensed biodiversity summary, and a regional “dryland” story, which users might relate to some of the map products provided. Further overview information is given such as LCC Land Cover and aridity maps, as well as climate diagrams.

Chapter 3 is a short overview of the data and methods applied.

Chapter 4 describes the developed indicators and presents selected indicator maps.

Chapter 5 discusses the indicators and their information content.

Chapter 6 contains a short outlook.

Annex 1 contains more detailed biodiversity descriptions for five dryland test sites: site 10 Southern Europe, site 12 Southern Africa West, Site 13 Western Sahel, site 15 Caatinga, Brazil, and site 20 Southern Australia.





## Table of Contents

1	Introduction to Diversity II .....	4
1.1	Scope of the Booklet .....	4
2	The Test Site <i>Southern Central USA</i> .....	5
2.1	Overview of Land Cover and Climate of the Test Site .....	7
2.2	Biodiversity Highlights .....	8
3	Materials and Methods .....	8
3.1	Generation of NPP-Proxies .....	8
4	Generated Indicators .....	10
4.1	From NPP Proxies to First Order Indicators .....	10
4.2	From First Order to Second Order Indicators .....	11
4.3	Selected Indicator Maps .....	13
5	Generic Interpretation of the Maps .....	26
6	Outlook .....	28
	References .....	29

## Figures

Figure 1: Distribution of global Diversity II dryland sites with internal numbering .....	4
Figure 2: Risk of a megadrought in Southwestern and Central USA .....	5
Figure 3: Overview of test site 16, Southern Central USA, showing land cover from the CCI Land Cover data set on the left-hand side and an aridity index map on the right-hand side derived from the CGIAR-CSI global aridity data base .....	7
Figure 4: Climographs of Denver, Colorado and Oklahoma City, Oklahoma, USA. Sources: .....	8
Figure 5: Scheme of the extracted phenological parameters, and corresponding rainfall and soil moisture data. (Location: South Africa, X: 25.7373764, Y: -29.896337) .....	9

## Tables

Table 1: Overview of the Indicator Maps shown in the booklets .....	12
---	----

# 1 Introduction to Diversity II

With the Diversity II project ESA aims at contributing with EO based methods to the strategic goals of the Convention on Biological Diversity (CBD), especially the supportive goal E: Enhance implementation through participatory planning, knowledge management and capacity building. Besides the CBD and other interested parties, also the UN Convention to Combat Desertification (UNCCD) is a major relevant and interested stakeholder. **The specific aim of this project is to set up an EO-based monitoring scheme for the assessment of status, changes and trends of biodiversity and ecosystem NPP (Net Primary Production) in global drylands using moderate resolution EO data.** The project is primarily based on ENVISAT MERIS data, which have been recorded from June 2002 to April 2012. Figure 1 gives an overview of the selected dryland sites, which constitute WWF (World Wildlife Fund) ecoregions.



Figure 1: Distribution of global Diversity II dryland sites with internal numbering

## 1.1 Scope of the Booklet

The booklet compiles and summarizes important outcomes per test site, and thus constitutes a regional complement to the project reports and the product user handbook (PUH). The PUH provides in depth and complete project documentation, though without highlighting every test site.

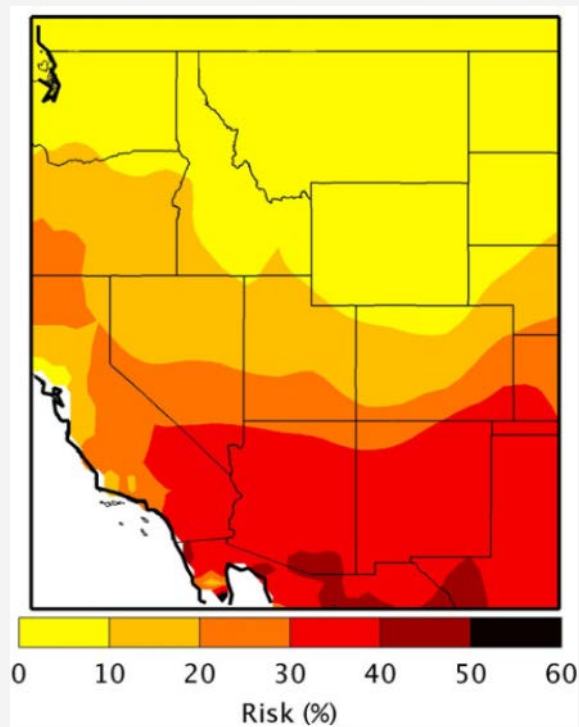
Interested users, for instance those who will not look at the map files themselves, will find some major results presented in the booklet, as well as a short description of the methodology and of the individual products shown.

The booklets and the PUH can be downloaded at <http://www.diversity2.info/products/>.

## 2 The Test Site *Southern Central USA*

### ***Dryland Story of Southern Central USA***

The southern Central part of the USA is facing various environmental issues in the past and present. Recurring droughts and land degradation are strongly characterizing this region of the USA. New studies reveal that the chances of a drought, which can last more than a decade, is at least 50% and the chances of a “megadrought”, one that lasts over 30 years, varies from 20 to 50 percent over the next century (Science Daily 2014). Figure 2 shows the risk of a megadrought in the Southwest and Central USA (Science Daily 2014).



**Figure 2: Risk of a megadrought in Southwestern and Central USA**

Up to now states like Oregon, Arizona, New Mexico, Oklahoma and Texas have a moderate drought risk, but this may be expected to turn higher in the future with the ongoing climate change and global warming. This scenario pose questions about the management of water in these regions and is going to be a huge challenge in the near future (Science Daily 2014).

**The WWF describes conservation status and threads to the region Western short grasslands (NA0815), western part of the study site, as follows:**

“Much of this area was severely affected by largely unsuccessful efforts to develop dryland cultivation. In western Kansas and eastern Colorado this damaging activity still continues. The Dustbowl of the 1930s was centered in this ecoregion, and stands as proof of the unsuitability of this area for farming, unless heavily irrigated. Areas in the southern part of this ecoregion in Texas have been invaded by Honey Mesquite (*Prosopis glandulosa*) and thorny shrubs, e.g. *Opuntia* spp., Lotebush (*Zizyphus obtusifolia*), *Berberis trifoliata*, forming a savanna or shrubland with a shortgrass prairie understory.

Nearly all of this ecoregion is in farms and ranches. Cropland cover varies between 30 to 60 percent across the ecoregion (even higher in western Kansas and western Nebraska), with grazing lands occupying the remainder. The amount of irrigated farmland varies across the ecoregion. In the

northern section in Colorado, almost all of the land is in farms or ranches with a build-up of urban areas along the eastern edge of the Rockies. About 68 percent is used for grazing domestic livestock, with about 15 percent of the area planted in dry crops.

In the extreme southern section of the ecoregion, grazing covers more than 75 percent of the area. Overgrazing has allowed the spread of woody shrubs and trees and the near permanent conversion of plains grasslands to desert scrublands. Approximately 40 percent of the remaining habitat in this ecoregion is considered to be intact, one of the highest percentages among North American grasslands, and the highest among grassland ecoregions greater than 70,000 square kilometers. In the western section of this ecoregion, rangelands are moderately to heavily grazed.

*“The major threat is conversion to agriculture. High wheat prices in the mid 1990s encouraged land conversion in western portions of the ecoregion. Center pivot irrigation has also caused conversion. Water flow into streams due to diversions is another problem. Fire apparently increases forage production in the eastern portion of this ecoregion, makes grasses more palatable, eliminates undesirable annuals, and suppresses the invasion of mesquite, juniper, and cacti (Wright and Bailey 1980). Thus, fire suppression constitutes another threat. Overgrazing by domestic stock, particularly in riparian areas, is a localized serious threat” (WWF, Hogan 2014).*

**For the Central and Southern mixed grasslands (NA0803), the eastern part of the study area, habitat loss and degradation, and threads are described as follows:**

*“Overall, only approximately five percent of the remaining habitat is considered to be intact. During the Dustbowl of the 1930s, basal cover of grasses on even moderately grazed and overgrazed grasslands declined from 80 percent or more to less than ten percent in a span of three to five years, but has since partially regained its cover. Natural vegetation has been converted to cropland or pasture on about 90 percent of this ecoregion in Oklahoma and Texas. In Kansas and Nebraska, about 60 percent is in cropland and about 35 percent is grazed by domesticated livestock”.*

*“The main threat to this ecoregion is conversion to agriculture. New technologies, including: four-wheel drive tractors, precision farming, herbicides, and irrigation make farming more productive in areas that were previously difficult to cultivate. The Conservation Reserve Program (CRP) in the eastern and southern part of this unit in the Oklahoma and Texas panhandles has kept some areas under good conservation management. If the CRP program were legislatively modified or discontinued, some of these areas would be under great threat of conversion. Overgrazing is less of a threat in most parts of the ecoregion because of the abundance of grazing-tolerant plant species. The invasion of tree species is a problem in some areas” (WWF, Hogan 2014).*

## **References**

- NOAA Climate (The National Oceanic and Atmospheric Administration) (2011), Drought Baking the Southern United States. <https://www.climate.gov/news-features/features/drought-baking-southern-united-states>.
- ScienceDaily (2014), Southwest U.S. may face 'megadrought' this century. Cornell University, <http://www.sciencedaily.com/releases/2014/08/140827122505.htm>.
- WWF, Hogan, C.M. (2014), Western short grasslands. The Encyclopedia of Earth. <http://www.eoearth.org/view/article/51cbef3a7896bb431f69d392/>
- WWF, Hogan, C.M. (2014), Central and Southern mixed grasslands. The Encyclopedia of Earth. <http://www.eoearth.org/view/article/51cbef3a7896bb431f69d392/>
- Toby R. Ault, Julia E. Cole, Jonathan T. Overpeck, Gregory T. Pederson and David M. Meko (2014), Assessing the risk of persistent drought using climate model simulations and paleoclimate data. Journal of Climate, 27

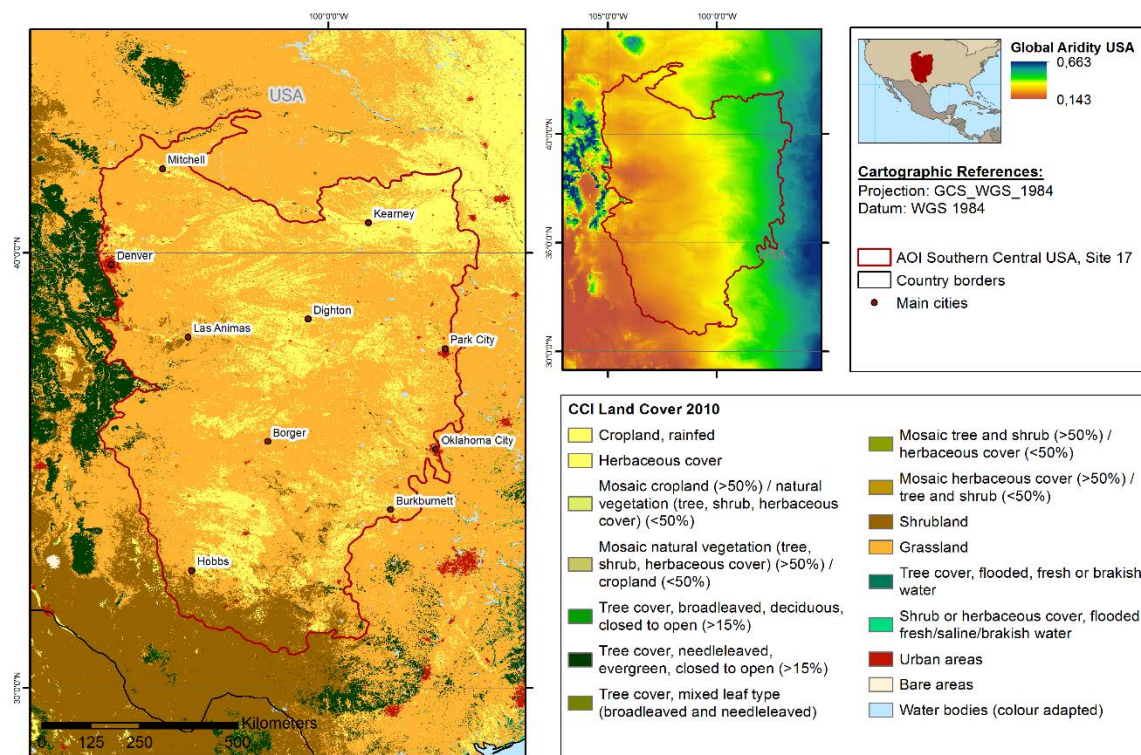


## 2.1 Overview of Land Cover and Climate of the Test Site

The study AOI is made up by the WWF ecoregions Western short grasslands (NA0815, <http://www.worldwildlife.org/ecoregions/na0815>) and the Central and Southern mixed grasslands (NA0803, <http://www.worldwildlife.org/ecoregions/na0803>).

For most of the ecoregions, information on geography, biodiversity, threats, etc. is found on <http://www.eoearth.org/view/article/51cbcd7a7896bb431f692731/?topic=51cbfc77f702fc2ba8129ab9>. Inserting the ID of the ecoregion or the name into the search window will lead to the respective ecoregion description site.

The maps in Figure 3 provide an overview of the study site. The left hand map presents the CCI Land Cover v1.4 2010 data, which were derived (<http://www.esa-landcover-cci.org/>) based on ENVISAT MERIS (300m) data. To the right, the CGIAR-CSI global aridity index map (Zomer et al. 2007, Zomer et al. 2008) is shown. The CGIAR-CSI global aridity index is computed as ratio of mean annual precipitation and mean annual potential evapotranspiration. Note that declining values indicate increasing aridity.



**Figure 3: Overview of test site 16, Southern Central USA, showing land cover from the CCI Land Cover data set on the left-hand side and an aridity index map on the right-hand side derived from the CGIAR-CSI global aridity data base.**

While the larger test site within the rectangle spans a broad spectrum of climatic conditions ranging from arid to humid, the actual AOI contains mainly semi-arid and some dry sub-humid land. The overall land cover patterns reflect to some degree the aridity gradients, and range from herbaceous cover, shrubland and grassland to open and closed tree cover.

Figure 4 shows two climographs of Denver, Colorado and Oklahoma City, Oklahoma, USA. Both climographs exhibit similar seasonal behavior with high average temperature from May to September. The annual precipitation is highest in May, yearly rainfall significantly higher in Oklahoma City at the eastern margin of the area than in the mountain city of Denver in the NW.

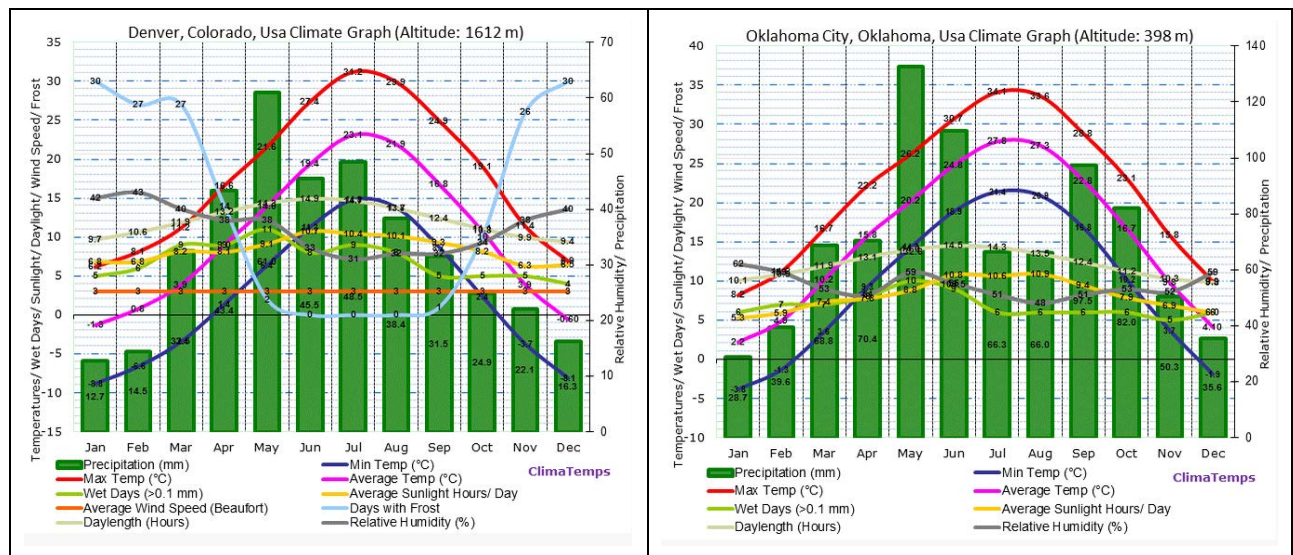


Figure 4: Climographs of Denver, Colorado and Oklahoma City, Oklahoma, USA. Sources:

<http://www.denver.climatemps.com/>, <http://www.oklahoma.climatemps.com/>

## 2.2 Biodiversity Highlights

The region is mostly composed of grasslands, where grama (*Bouteloua* sp.) and buffalo grasses (*Buchloe dactyloides*) dominate. Despite nearly the entire region being used by farms and ranches, some blocks of intact habitat still exist and native fauna is relatively unaffected by fragmentation. Thus, the area is still among the richest in the USA for species of butterflies, birds, and mammals.

## 3 Materials and Methods

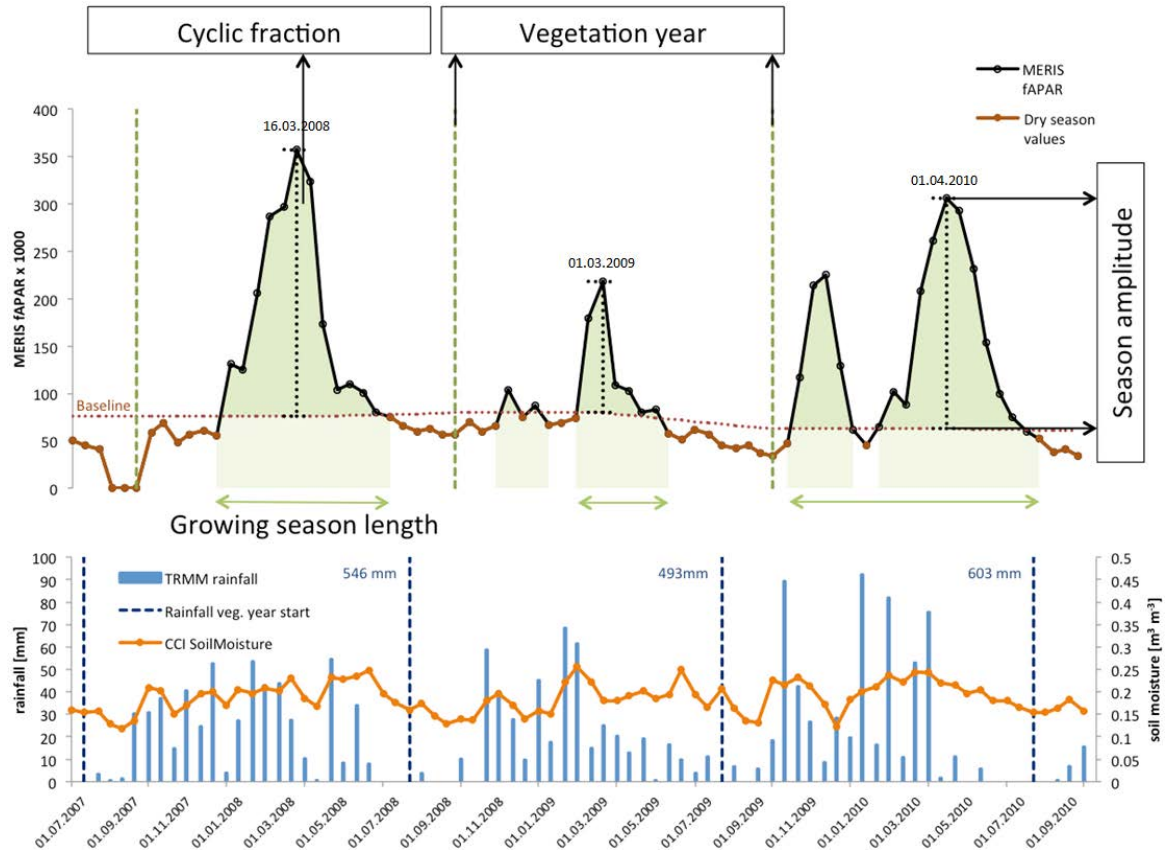
Based on ENVISAT MERIS FR and RR (Full and Reduced Resolution) data with a spatial resolution of 300m and respectively 1200m, all NPP proxies presented here and the indicators derived therefrom originate from the fraction of absorbed photosynthetically active radiation (fAPAR) computed according to Gobron et al. 2011. The fAPAR values are compiled on a bi-weekly basis, resulting in time series data with 24 halfmonthly values per calendar year. In addition, TRMM 3b42 rainfall data (<http://trmm.gsfc.nasa.gov/>) were used to relate the productivity data to precipitation, as well as CCI soil moisture data (<http://www.esa-soilmoisture-cci.org/>) as alternative data for water availability. Beyond 50° North and South, GPCP (<http://www.gewex.org/gpcpdata.htm>) rainfall data were taken, as TRMM data end at 50° N and S. For the period prior to the MERIS period, NOAA GIMMS NDVI data (<http://glcf.umd.edu/data/gimms/>) and GPCP rainfall data were confronted to show the “historical” development of vegetation and rainfall from 1982 to 2002 (map [P56](#)), i.e. prior to the MERIS period.

### 3.1 Generation of NPP-Proxies

In a first step, phenological parameters are derived individually for each year and pixel, shown in Figure 5. The diagram shows the temporal course of the MERIS fAPAR data during a 3-year period and the subdivision into different seasonal periods. The **vegetation year** includes the full yearly vegetation cycle starting at the turning of the preceding *dry or cold season* to the green season and ending after the following *dry/cold season* – or in case of several green seasons during a year – at the begin of the (statistically) dominant green season. The **vegetation year length** varies with possible shifts of the green season start time, which results from the high rainfall variability typical for drylands. The average (median) start time of the vegetation years starting in 2003 to 2010 is presented in map [P57](#).



The **vegetation year** can be subdivided into different periods, limited by defined starting and ending points in time. The **growing season** includes the major peak(s), i.e. ascending and descending parts of the time series and starts once a selected greenness threshold is surpassed on the way from the SoS to the green peak. The starting time of the growing season is shown in map [P59](#). The **dry season** (brown parts of the curve) starts once a defined lower fAPAR threshold is passed. The thresholds depend on the seasonal amplitude and especially on the average level of the dry season values.



**Figure 5: Scheme of the extracted phenological parameters, and corresponding rainfall and soil moisture data. (Location: South Africa, X: 25.7373764, Y: -29.896337)**

The growing season length is shown in map [P58](#). For the above described phenological periods, the MERIS fAPAR values have been temporally integrated to either sum or average values. The results are called “**NPP proxies**”, and constitute yearly (one value per vegetation year) values. The developed indicator maps are primarily based on the following NPP proxies:

- **Average vegetation year fAPAR:** Mean value of all fAPAR values within one full vegetation cycle, constituting a proxy for the annual NPP (map [P01](#)) and/or standing green biomass.
- **Cyclic fraction fAPAR:** The cyclic fraction of the vegetation is comprised of summed fAPAR values of the green peak(s) during a vegetation year, subtracting the non-cyclic base levels. The cyclic fraction fAPAR can be interpreted as the amount of NPP that is directly related to the annual cycle of the climatic vegetation growth factors, especially rainfall (map [P02](#)).
- **Average dry season fAPAR:** For the dry season the low fAPAR values after the green peak are averaged. The dry season greenness values reflect the portion of plants that remain green after senescence of the annual vegetation or grow new green leaves during the dry period. High dry season levels indicate the presence of shrubs, bushes and trees (map [P03](#)).

- **Percent cyclic vegetation of vegetation year greenness:** The share of the cyclic vegetation of the entire vegetation year NPP is expected to decline with the increasing presence of evergreen vegetation. Shrublands and forests (with fully or partly green leaves in the dry period) thus tend to have lower values for this indicator than crops and grassland (this indicator is contained in two second order indicators, see map [P50](#) and [P51](#)).

### **Rain Use Efficiency and Soil Moisture Use Efficiency**

In addition to the NPP proxies, Rain Use Efficiency (RUE) and Soil Moisture Use Efficiency (SMUE) indicators were derived, in order to relate vegetation productivity and its spatial patterns and temporal variability to rainfall. While RUE is based on a widely applied, tested, discussed, and partly modified approach of Le Houérou (1984), SMUE is an analogue concept based on soil moisture data instead of rainfall as water availability parameter. Le Houérou defined RUE as *quotient of annual primary production by annual rainfall*. RUE thus expresses the amount of biomass growing per unit rainfall water. Theoretically, soil moisture is more directly related to plant water availability than rainfall, so SMUE is offered as a potentially useful additional indicator. RUE (and assumedly also SMUE) depends heavily on climate, soil properties, and vegetation conditions. For instance, as Le Houérou states, it decreases with increasing aridity due to the decreasing rate of useful rainwater (increasing evaporation, heavy rains, soil crusting and consequently more runoff, etc.).

It further depends on the way it is derived, especially the input parameters/data sources used for vegetation and rainfall. Since RUE is known to not necessarily normalize vegetation productivity based on rainfall variability, as RUE can be found to be correlated with rainfall over the years at a given place, its actual usefulness as an indicator for vegetation degradation (where RUE is supposed to decrease) is therefore limited and widely disputed. Nevertheless, we have included RUE and SMUE status and trend products in our products and the users may decide about its usefulness. Respective RUE and SMUE trend products are shown in the maps [P37](#) and [P40](#).

The function of RUE (or SMUE) as status indicator of ecosystem productivity and its usefulness for the comparison of the productivity of different ecosystems as proposed by Le Houérou (1984) is obvious and demonstrated in the maps [P08](#), [P17](#).

## **4 Generated Indicators**

### **4.1 From NPP Proxies to First Order Indicators**

By analyzing the annual NPP proxies and RUE/SMUE indicators and rainfall and soil moisture through time, a set of indicators for vegetation/ecosystem condition and change was derived. These can be divided into status and trend type indicators. Given the MERIS data period from June 2002 to April 2012 and the globally varying vegetation cycles, NPP proxy and RUE/SMUE indicators for a total of eight vegetation years could be extracted, starting in 2003/(2002) and ending in 2011/(2012).

Hence, MERIS based status and trend indicators cover worldwide eight vegetation years. Status indicators for this period include 8-year averages (maps [P02](#), [P03](#)) and the coefficients of variation (maps [P04](#), [P26](#), [P30](#)P30 ). In addition, the 8-year period was subdivided into two epochs covering four vegetation years each. Epochal status maps and difference maps were generated for rainfall and soil moisture. The epochal difference map for rainfall is shown for rainfall in this booklet (map [P46](#)).

The trend slope maps were derived with the non parametric Theil Sen trend slope estimator (Theil 1950, Sen 1968) and constrained with the Mann Kendall significance test (Kendall 1962) to trends with a probability greater than 0.9 (maps [P37](#) [P40](#)P40 ).

All indicator maps have been classified into distinct ranges of the original continuous values, using the same class intervals and colour scheme worldwide. For this reason the maps are globally comparable, though in rare cases not locally optimized. However, users can apply their own colour

schemes to their individual downloaded maps, and in addition to the classified maps, also **the underlying continuous data sets are provided for further analyses on request.**

## **4.2 From First Order to Second Order Indicators**

The first order status and trend indicators have been combined to derive more abstract and synoptic, second order indicators showing status, changes and trends of the most essential first order indicators in various relations to each other. Basically three types of such combinations were generated:

### ***1. Relation between NPP proxies (vegetation year average greenness) and the percent of cyclic vegetation of vegetation year greenness***

This indicator group highlights status, changes and trends of the relation between the two first order indicators. The status indicator (map [P50](#)) can be regarded as a functional classification of vegetation productivity and basic type: perennial versus annual/seasonal/ephemeral vegetation. The respective map is closely related to land use/cover patterns and also to soil type and terrain structures. The change indicator (map [P51](#)) displays epochal (2003-2006 versus 2007-2010) changes between the aggregated classes of the two underlying first order indicators.

### ***2. Trend relation between vegetation year greenness and seasonal greenness***

This indicator combines the vegetation year greenness trends with those of the cyclic vegetation and the dry season greenness. It has commonalities with [P51](#), but the trend patterns deviate partly from the change patterns. Essentially this indicator (map [P52](#)) shows the development of the perennial and seasonal green vegetation in relation to each other during the observation period. For example, a positive vegetation year or dry season trend without a positive cyclic vegetation trend may possibly exhibit the dominant growth of bushes/trees versus cyclic vegetation. Vice versa, a prevailing positive trend of the cyclic vegetation may potentially point to a dominant increase of crop areas or grasses.

### ***3. Direct relation between Rainfall and Vegetation Productivity***

As an alternative to RUE/SMUE trends contained in the first order products, as well as to the so called “RESTREND” approach (see for instance Wessels et al. 2012), which assume linearity or even proportionality (RUE) between rainfall and NPP, assumption-free relation indicators between rainfall and NPP trends were generated. Separate indicators were prepared for the relation between rainfall and vegetation year greenness, cyclic vegetation, and dry season greenness, respectively (see maps [P53](#), [P54](#), and [P55](#)). In addition, the same type of indicator was derived for a time span prior to the MERIS period (1981-2002), using GPCP rainfall data and NOAA GIMMS NDVI data (see map [P56](#)).

**Table 1: Overview of the Indicator Maps shown in the booklets**

Product number	Product name	Product description
1	Vegetation year average greenness 2003-2010	Vegetation year average greenness 2003-2010 26 greenness classes Mean of 8 vegetation years average values
2	Cyclic vegetation greenness 2003-2010	Cyclic vegetation greenness 2003-2010 26 greenness classes Mean of 8 cyclic fraction sum values
3	Dry season greenness 2003-2010	Dry season greenness 2003-2010 26 greenness classes Mean of 8 dry season average values
4	Variability of vegetation year greenness 2003-2010	Vegetation year greenness variability 2003-2010 26 greenness variability classes Variation coefficient of 8 vegetation year average values
8	Rain Use Efficiency of vegetation year average 2003-2010	Vegetation year RUE mean 2003-2010 26 RUE classes Mean of 8 vegetation year RUE values
17	Soil Moisture Use Efficiency of vegetation year average 2003-2010	Vegetation year SMUE 2003-2010 26 SMUE classes Mean of 8 vegetation year SMUE values
25	TRMM precipitation average of vegetation years 2003-2010	Vegetation year trmm rainfall mean 2003-2010 26 trmm rainfall classes Mean of 8 vegetation year rainfall sum values
26	TRMM precipitation variability of vegetation years 2003-2010	Vegetation year trmm rainfall variability 2003-2010 26 trmm rainfall variability classes Variation coefficient of 8 vegetation year rainfall sum values
29	Soil Moisture average of vegetation years 2003-2010	Vegetation year CCI Soil Moisture mean 2003-2010 26 SM classes Mean of 8 vegetation year SM average values
30	Soil Moisture variability of vegetation years 2003-2010	Vegetation year CCI Soil Moisture variability 2003-2010 26 SM variability classes Variation coefficient of 8 vegetation year SM average values
37	Rain Use Efficiency trend slopes of cyclic vegetation 2003-2010	Trendslope of cyclic fraction RUE 2003-2010 12 slope classes Theil-Sen median trend, masked at p 0.9
40	Soil Moisture Use Efficiency trend slopes of cyclic vegetation 2003-2010	Trendslope of cyclic fraction SMUE 2003-2010 12 slope classes Theil-Sen median trend, masked at p 0.9
46	Change in vegetation year precipitation between the epochs 2003-2006 and 2007-2010	Epochal difference of vegetation year TRMM rainfall 2003-2006 and 2007-2010 12 difference classes
50	Functional Classes	Relation between vegetation year greenness classes and the classified percentage of the cyclic vegetation of the yearly vegetation 2003-2010

51	Functional Differences	Epochal (2003-2006/2007-2010) difference map of the relation between vegetation year greenness classes and the classified percentage of the cyclic vegetation of the yearly vegetation
52	Seasonal Trend Relations	Relation between vegetation year greenness trends and seasonal greenness trends 2003-2010
53	TRMM Rainfall versus MERIS fAPAR vegetation year greenness trend	Relation between vegetation year rainfall trends and vegetation year greenness trends 2003-2010
54	TRMM Rainfall versus MERIS fAPAR cyclic fraction greenness trend	Relation between cyclic fraction rainfall trends and cyclic fraction greenness trends 2003-2010
55	TRMM Rainfall versus MERIS fAPAR dry season greenness trend	Relation between vegetation year rainfall trends and dry season greenness trends 2003-2010
56	GPCP Rainfall versus GIMMS NDVI vegetation year greenness trend	Relation between vegetation year GPCP rainfall trends and vegetation year greenness (GIMMS NDVI) trends 1981-2002
57	Median start of vegetation year 2003-2010	Median of the start times (half month number in the calendar year) of the vegetation year 2003-2010
58	Mean length of vegetation season 2003-2010	Mean of the lengths of the vegetation seasons 2003-2010
59	Mean start time of vegetation season 2003-2010	Average start time (half month number in the calendar year) of the vegetation seasons 2003-2010

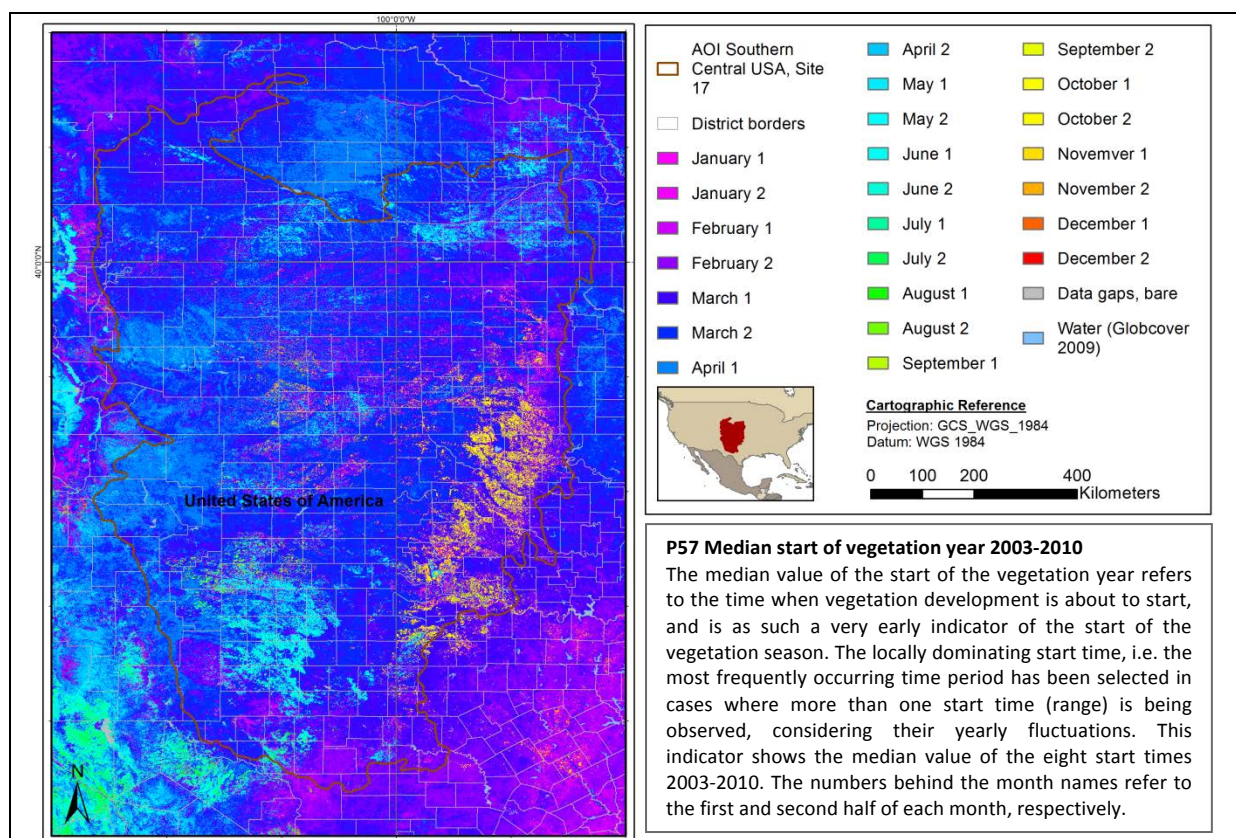
All map products shown in the booklet, and all other map products (which are of similar kind but with different seasonal and water parameter combinations) along with meta data, product lists and short descriptions can be downloaded at <http://www.diversity2.info/products/> .

### 4.3 Selected Indicator Maps

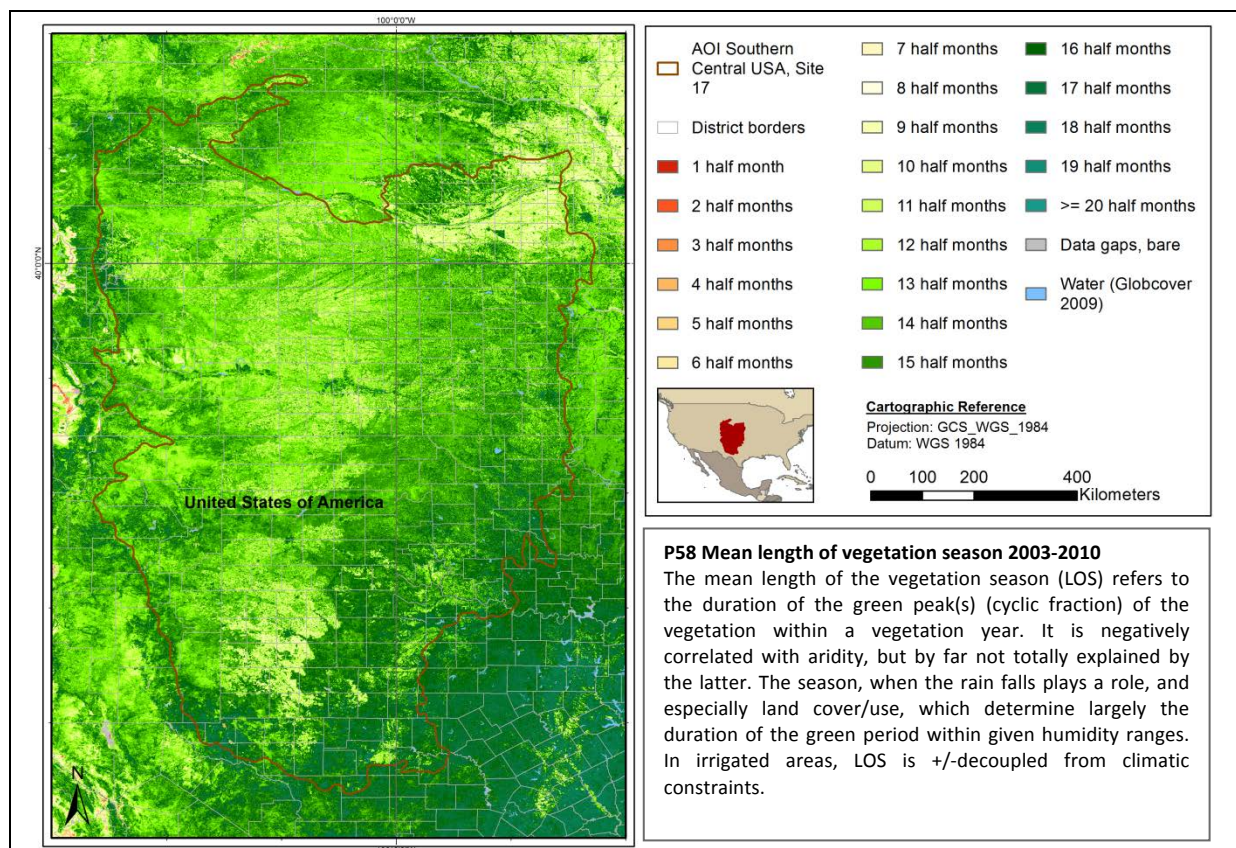
In the next section, the listed indicator maps are shown with descriptions. First, the three phenological maps (P57 – P59) are displayed, followed by the second order indicator maps (P50 – P56, with P46 included). The last three pages contain representative first order indicator status and trend maps (P1 – P40).



## P57 Median start of vegetation year 2003-2010

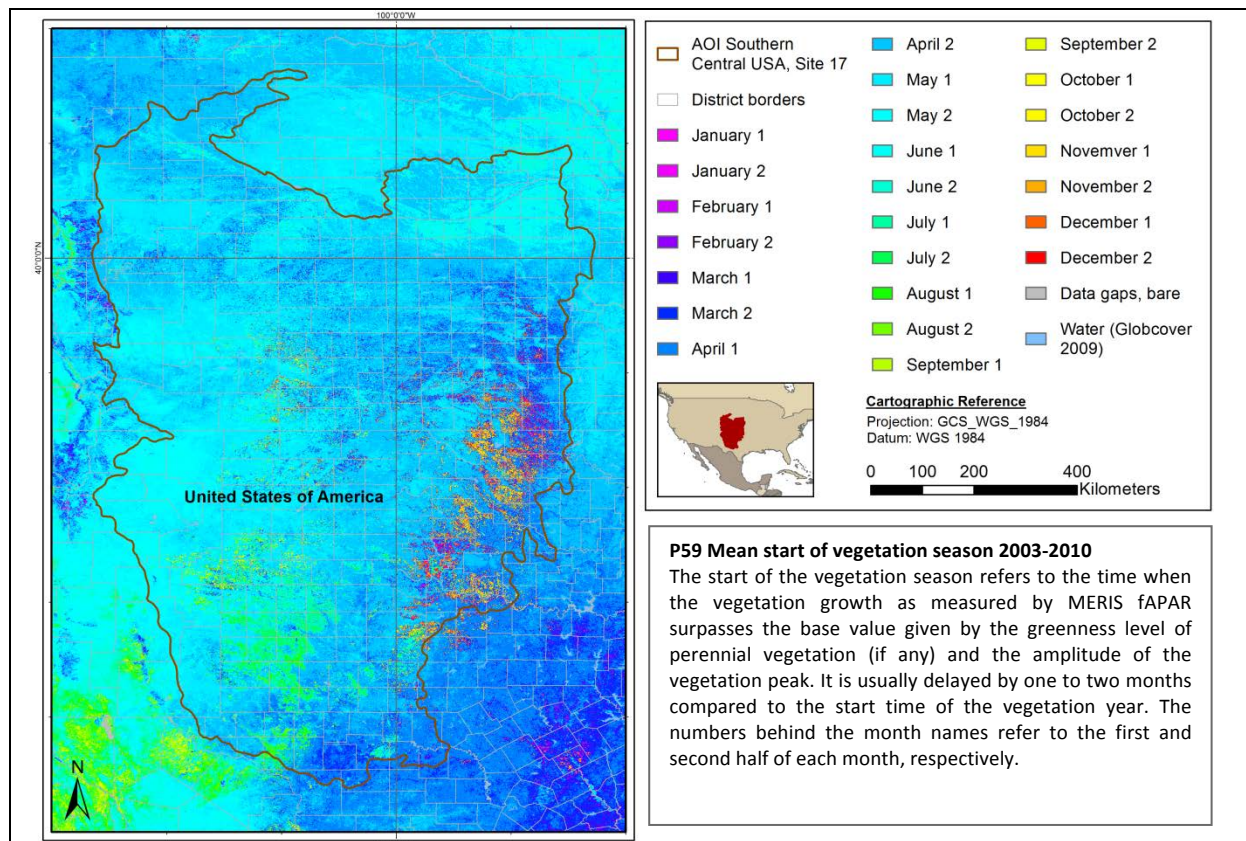


## P58 Mean length of vegetation season 2003-2010

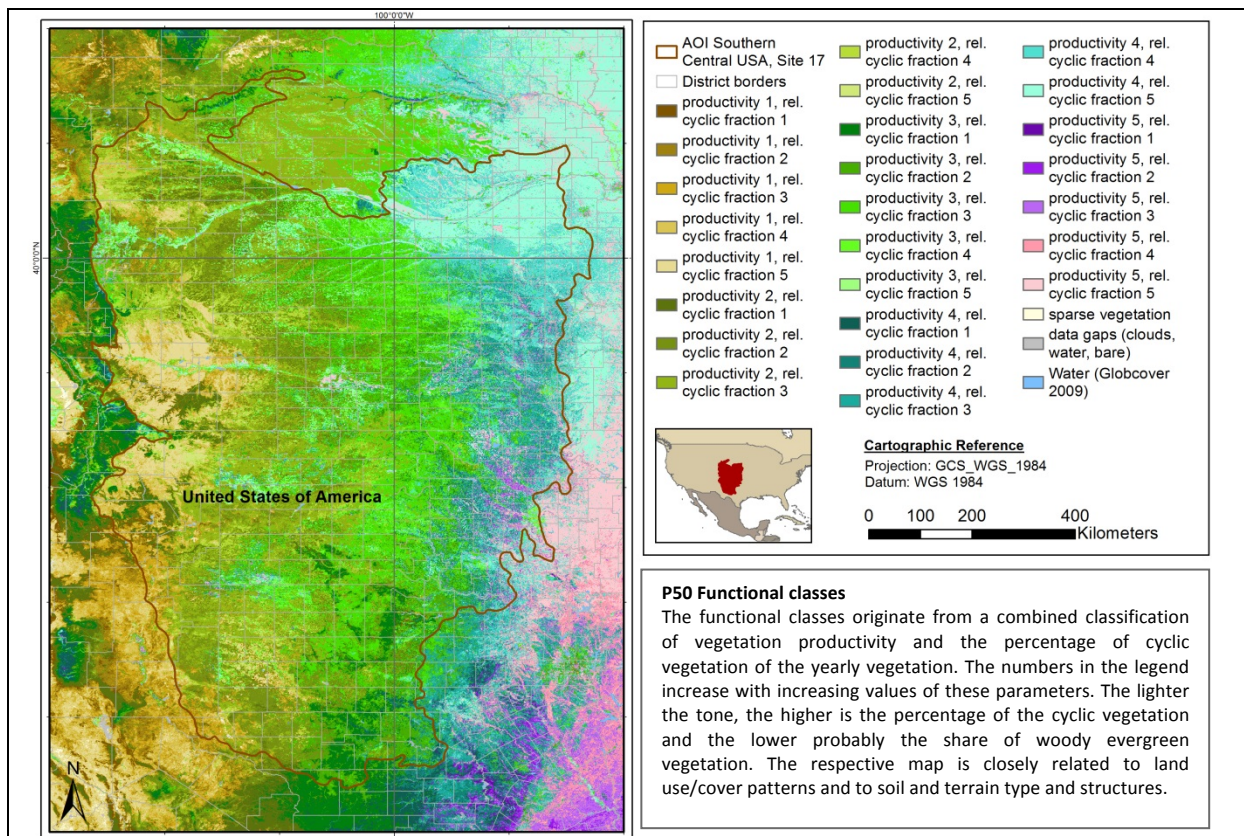




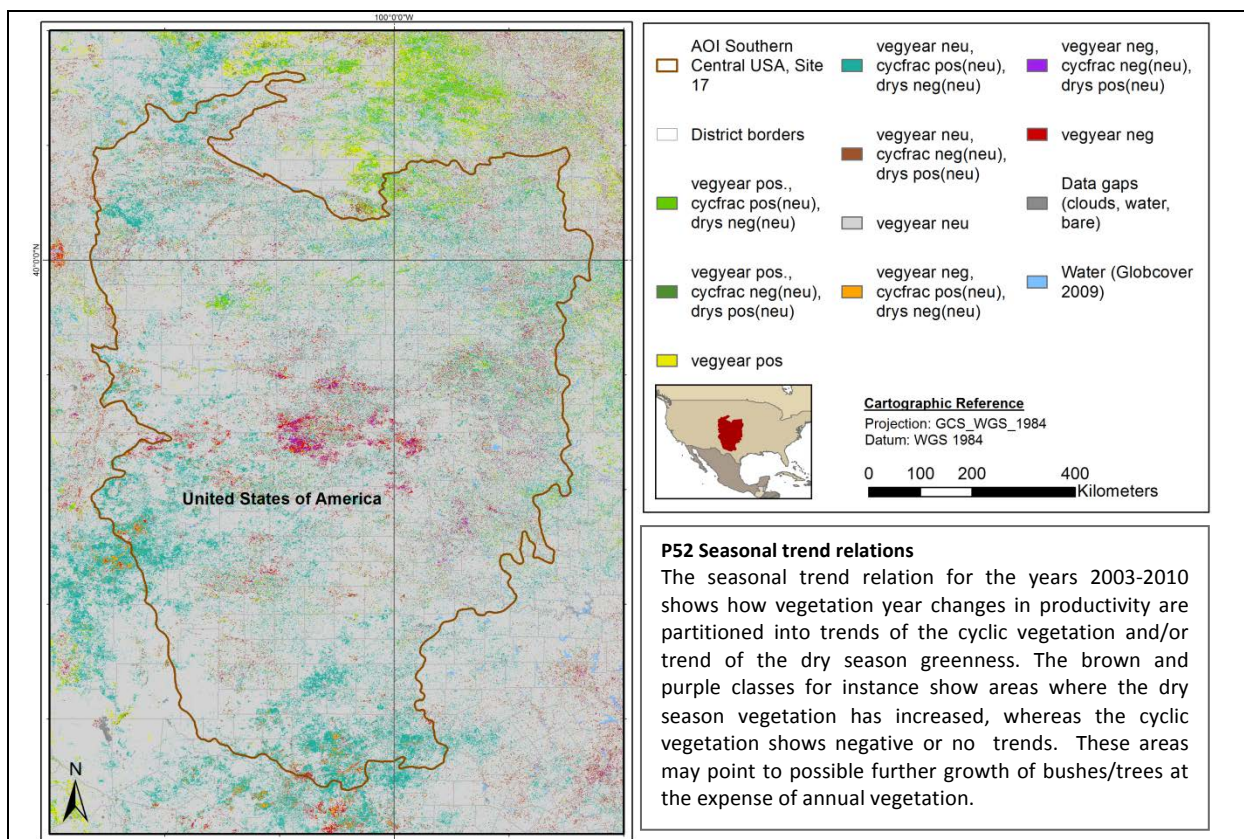
## P59 Mean start of vegetation season 2003-2010



## P50 Functional classes

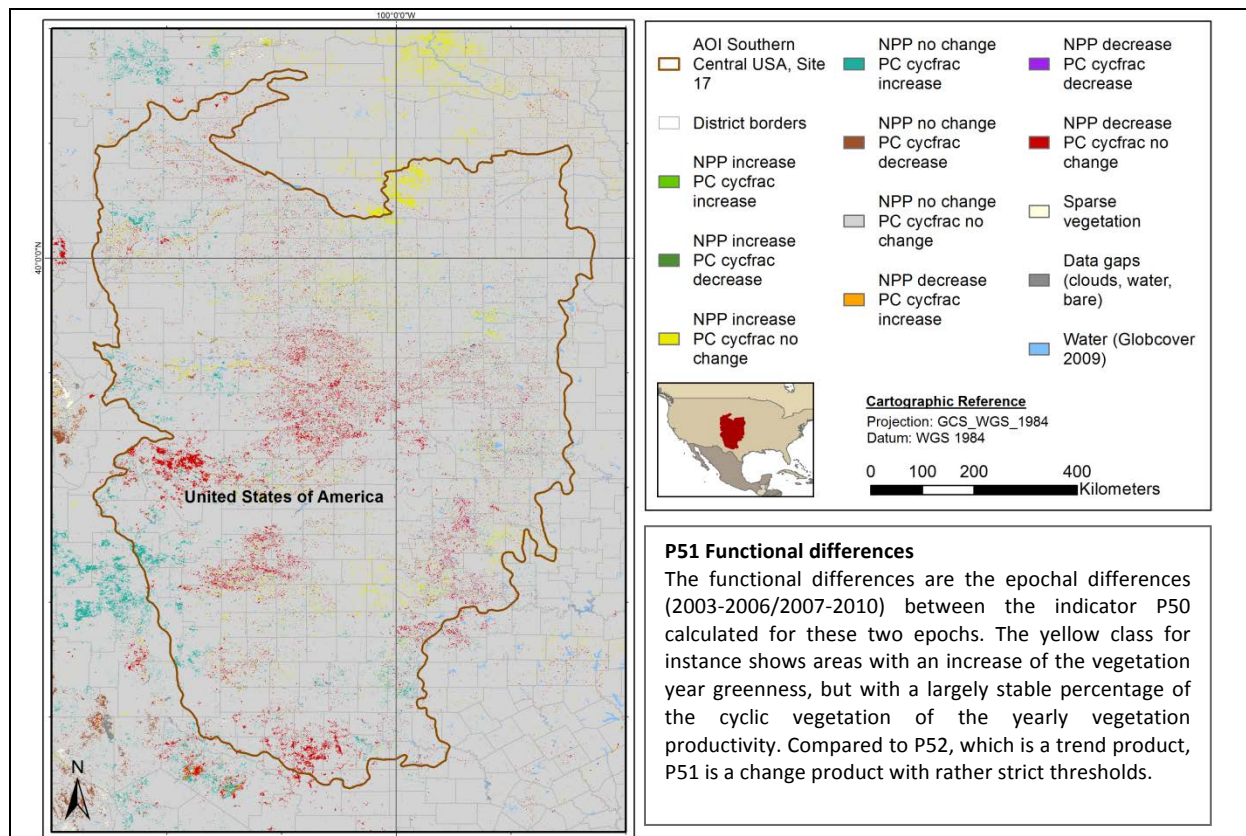


## P52 Seasonal trend relations

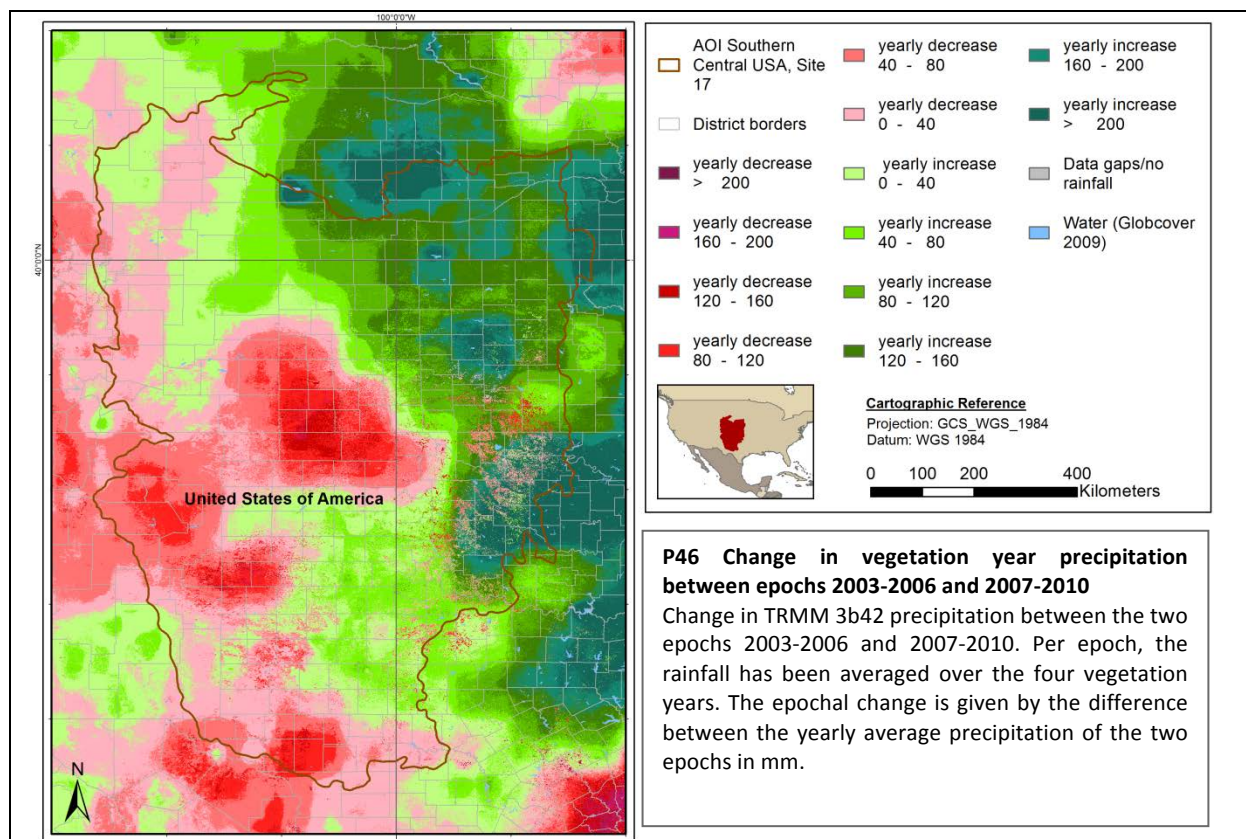




## P51 Functional differences

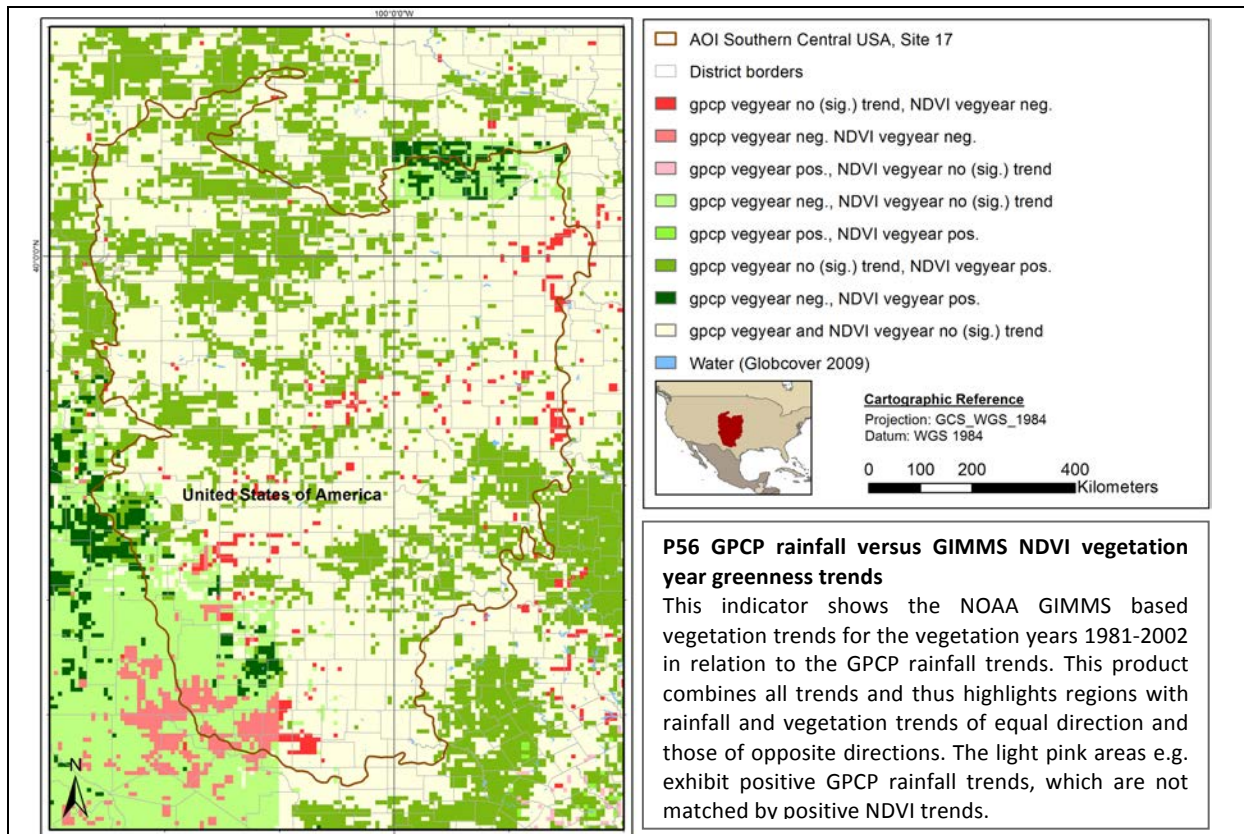


## P46 Change in vegetation year precipitation between epochs 2003-2006 and 2007-2010

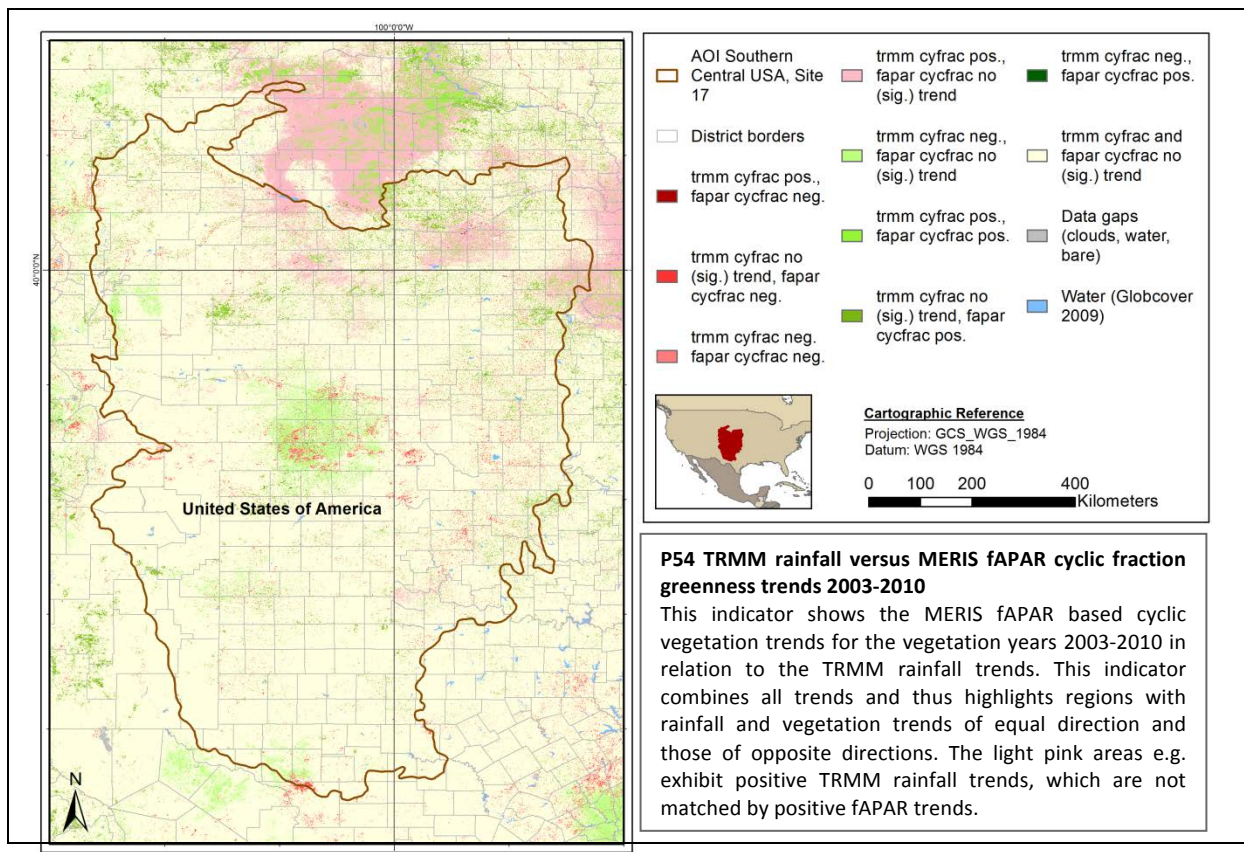




## P56 GPCP rainfall versus GIMMS NDVI vegetation year greenness trends 1981-2002

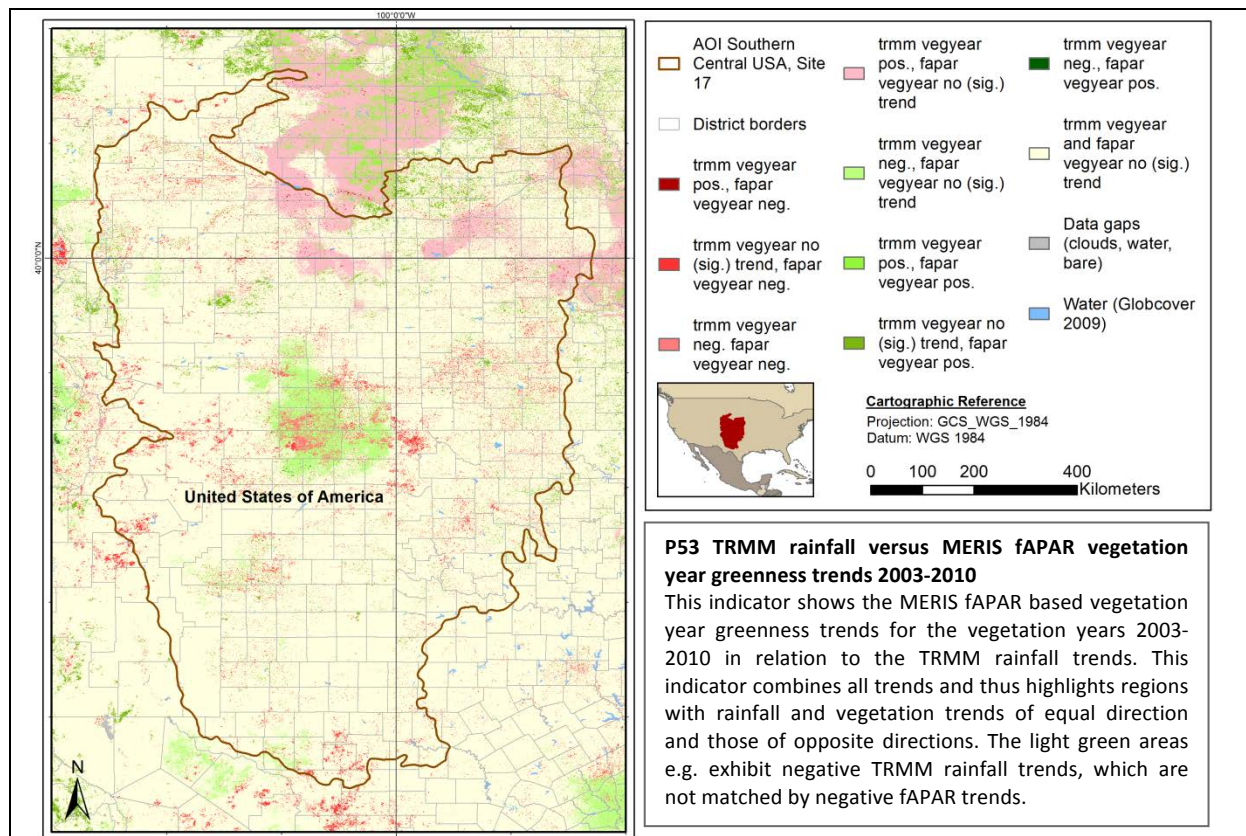


## P54 TRMM rainfall versus MERIS fAPAR cyclic fraction greenness trends 2003-2010

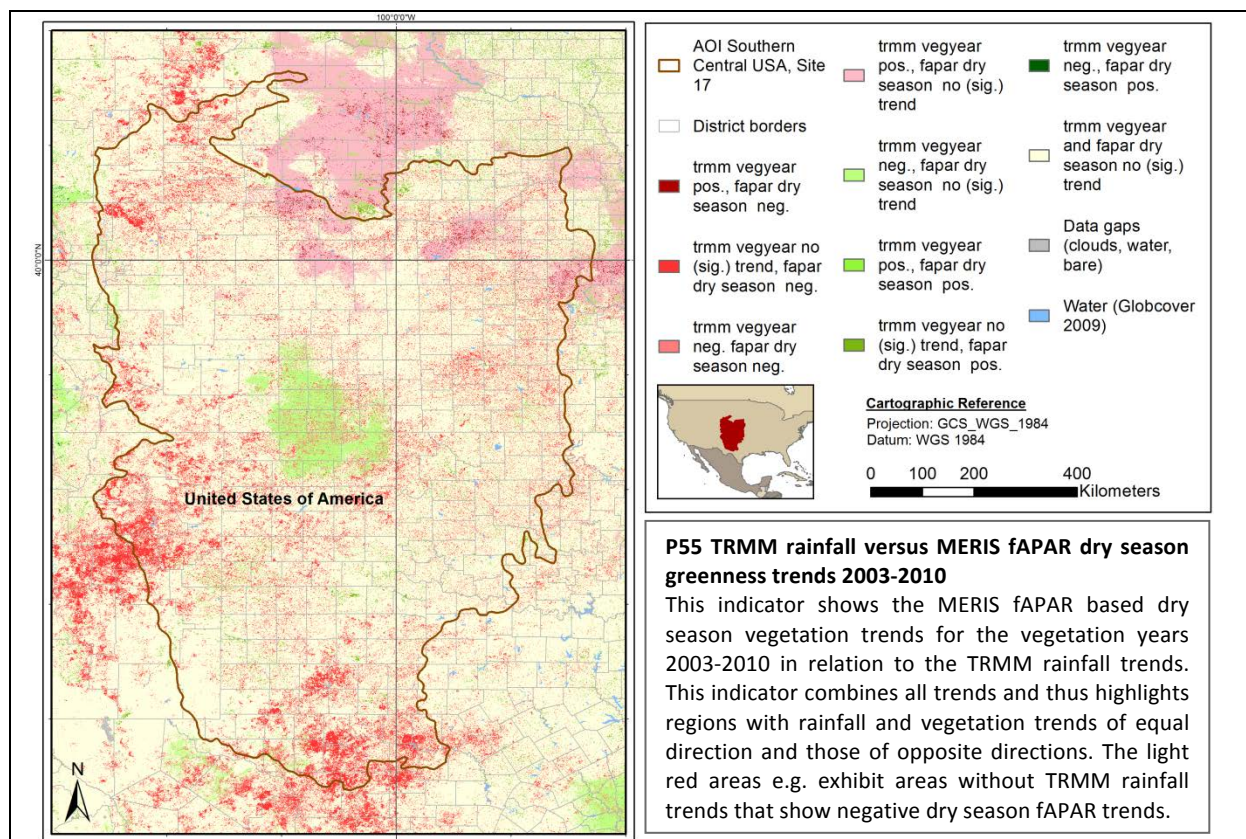




## P53 TRMM rainfall versus MERIS fAPAR vegetation year greenness trends 2003-2010

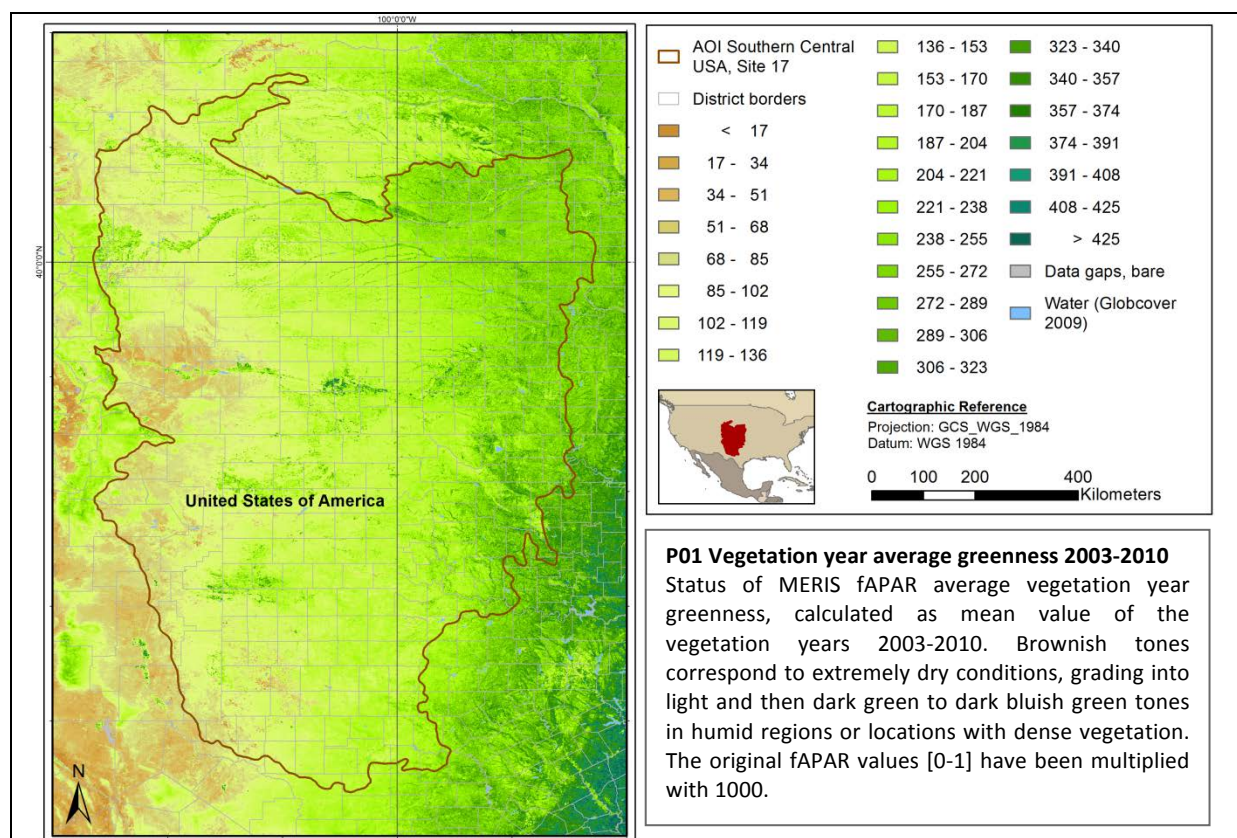


## P55 TRMM rainfall versus MERIS fAPAR dry season greenness trends 2003-2010

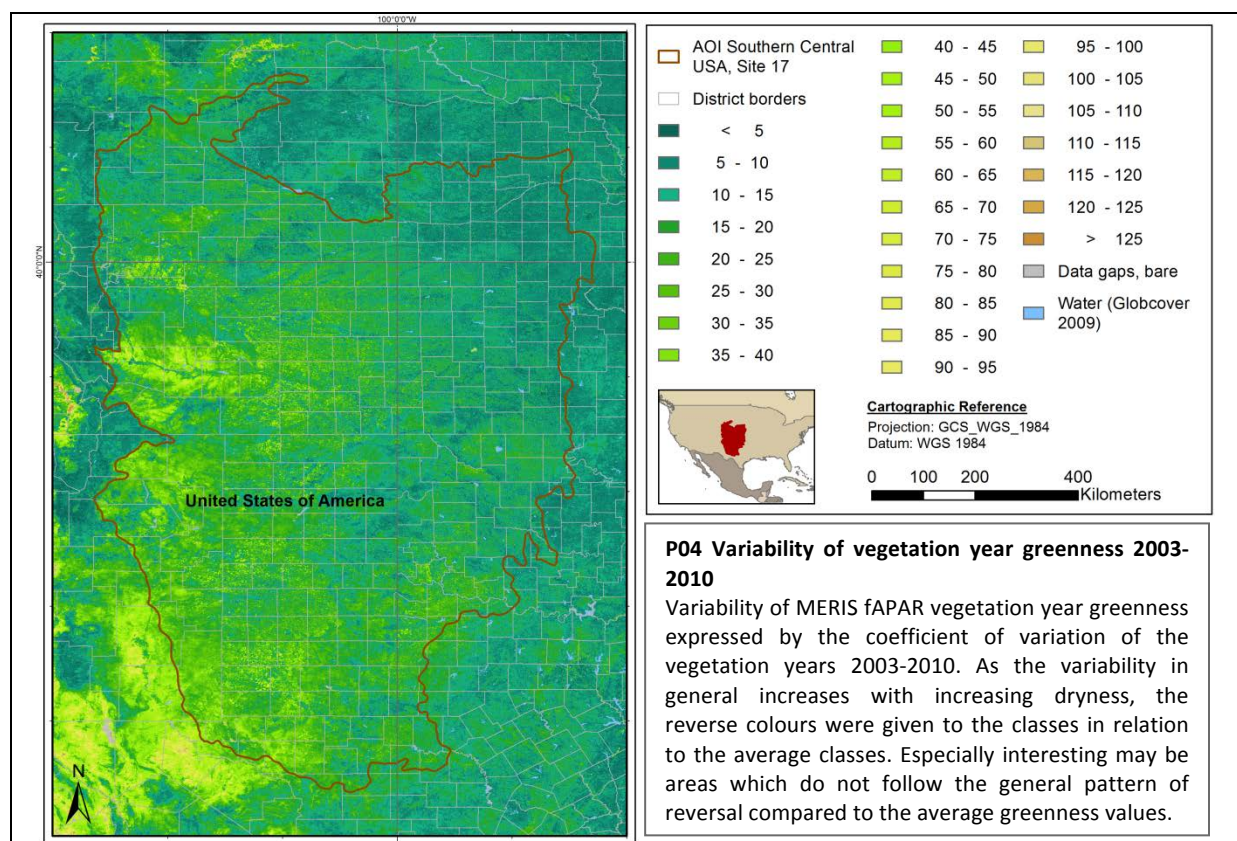




## P01 Vegetation year average greenness 2003-2010

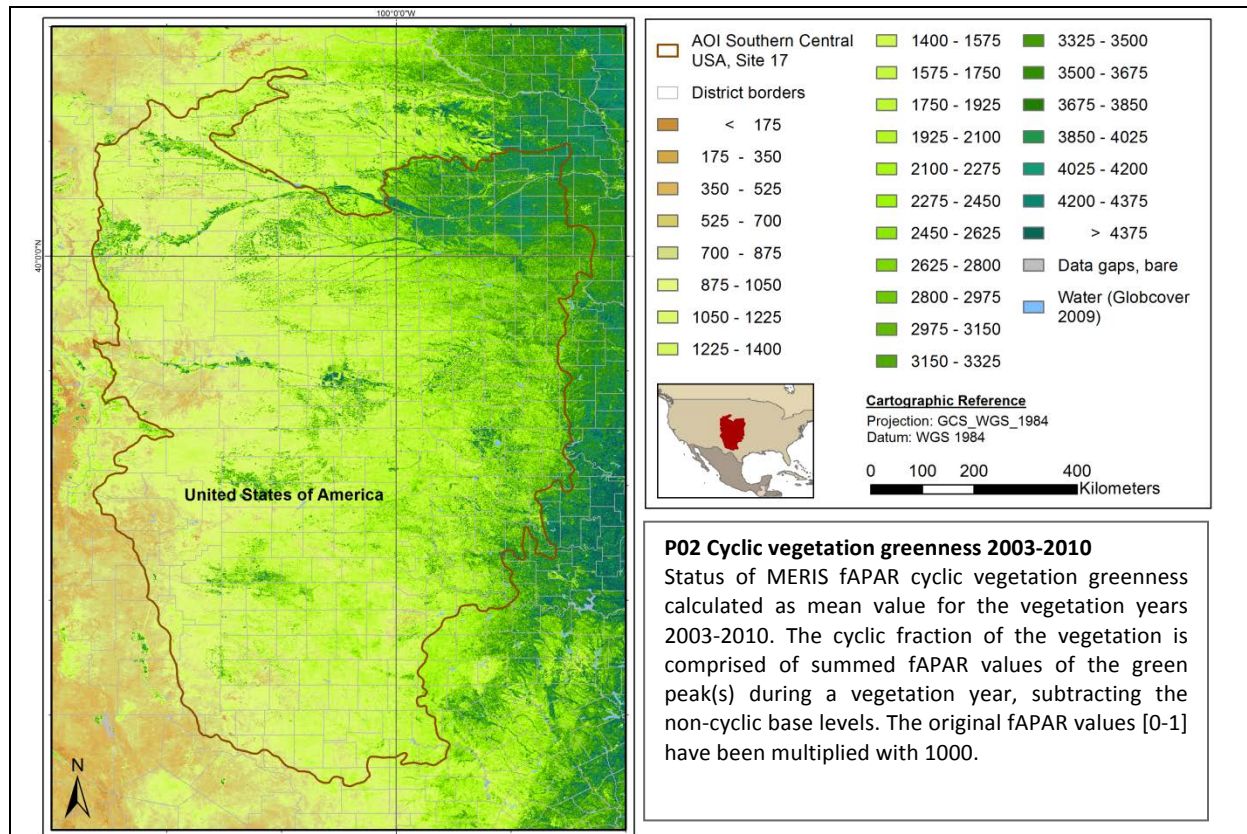


## P04 Variability of vegetation year greenness 2003-2010

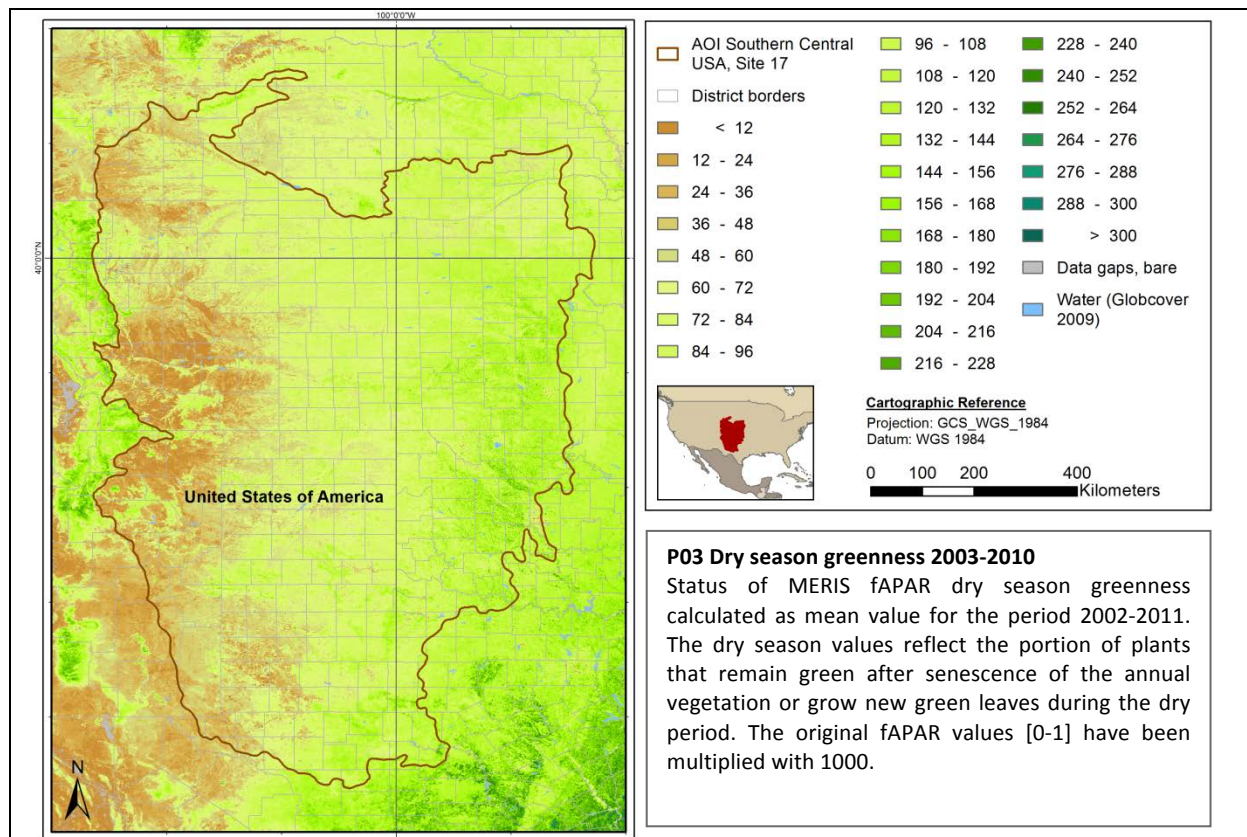




## P02 Cyclic vegetation greenness 2003-2010

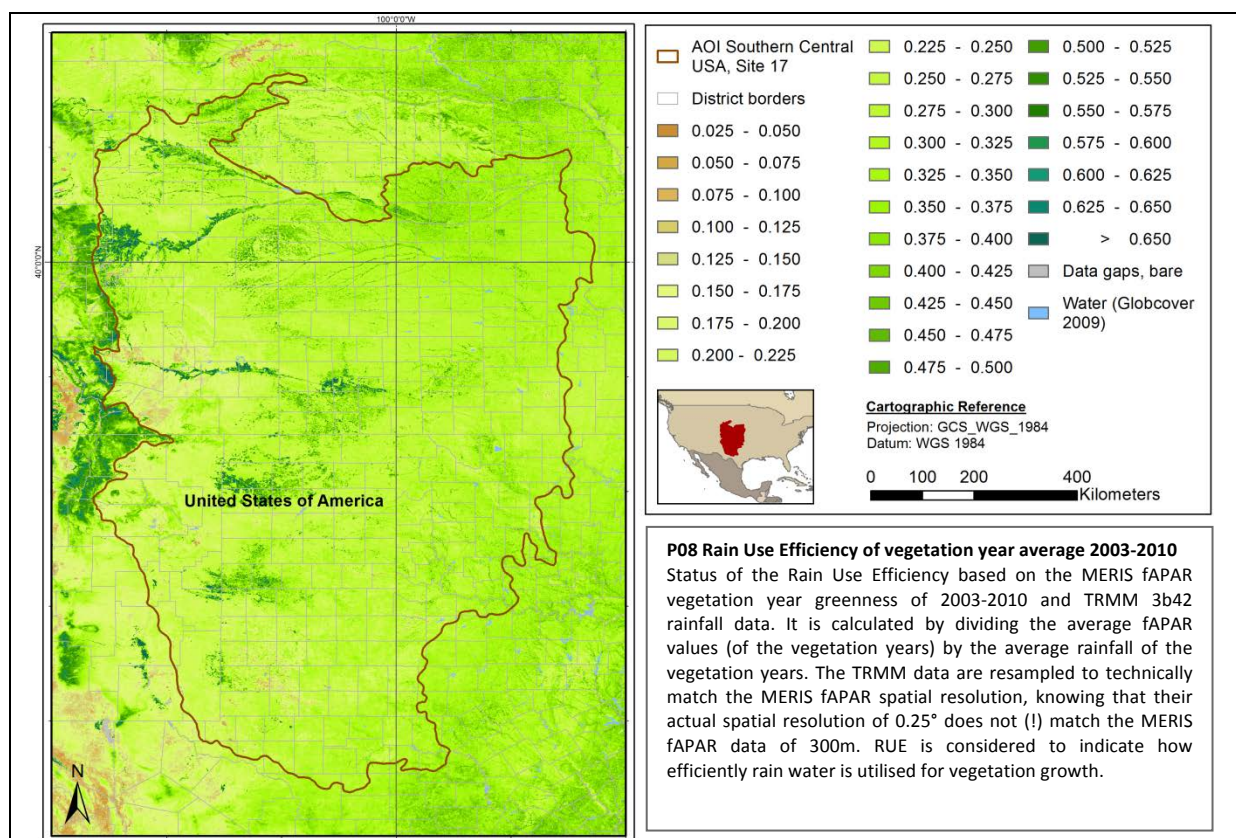


## P03 Dry season greenness 2003-2010

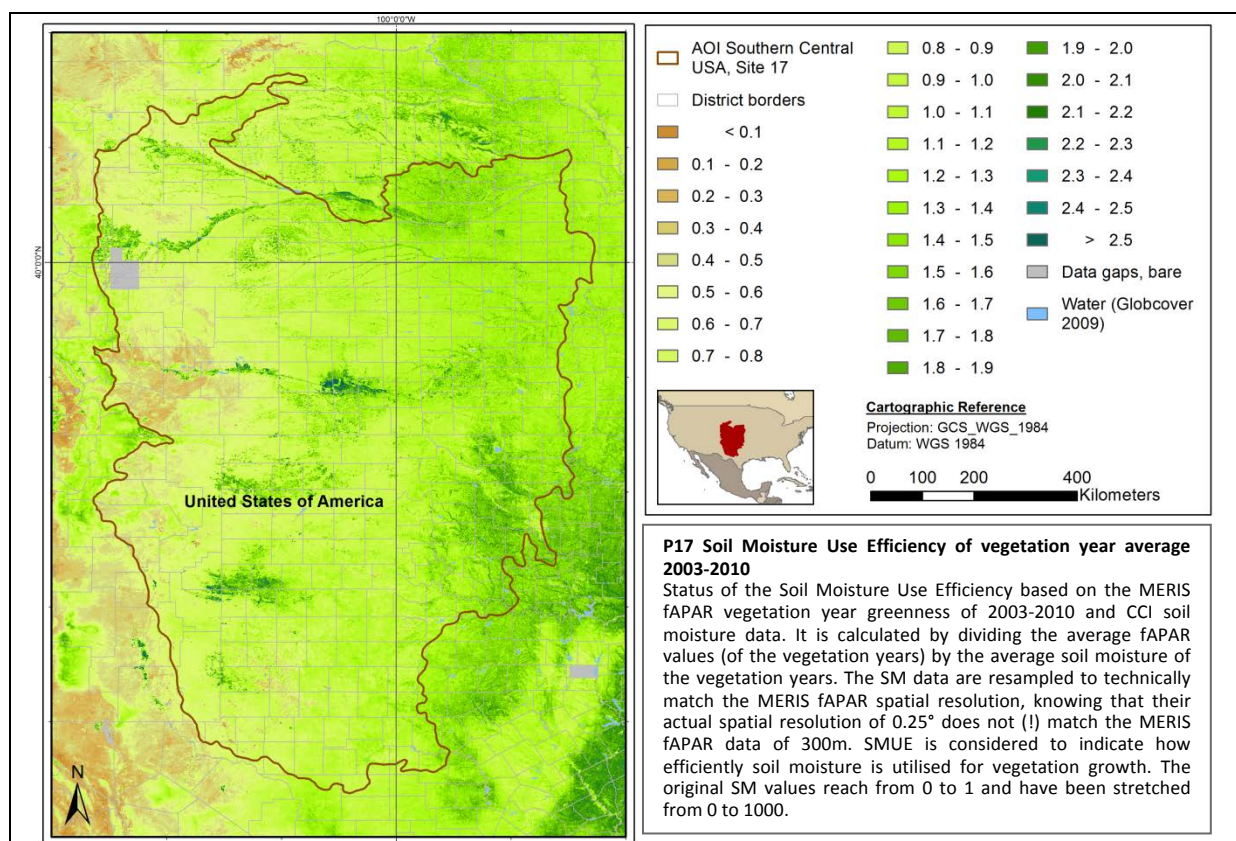




## P08 Rain Use Efficiency of vegetation year average 2003-2010

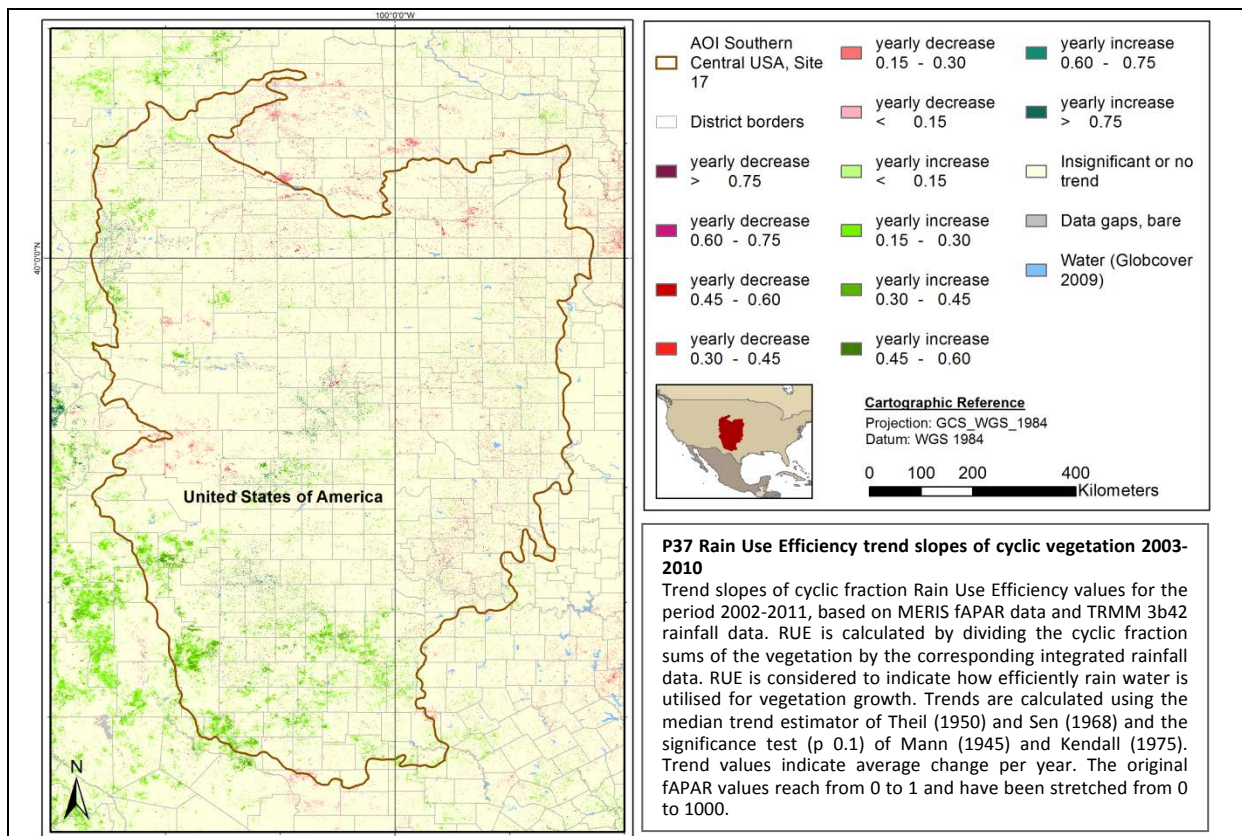


## P17 Soil Moisture Use Efficiency of vegetation year average 2003-2010

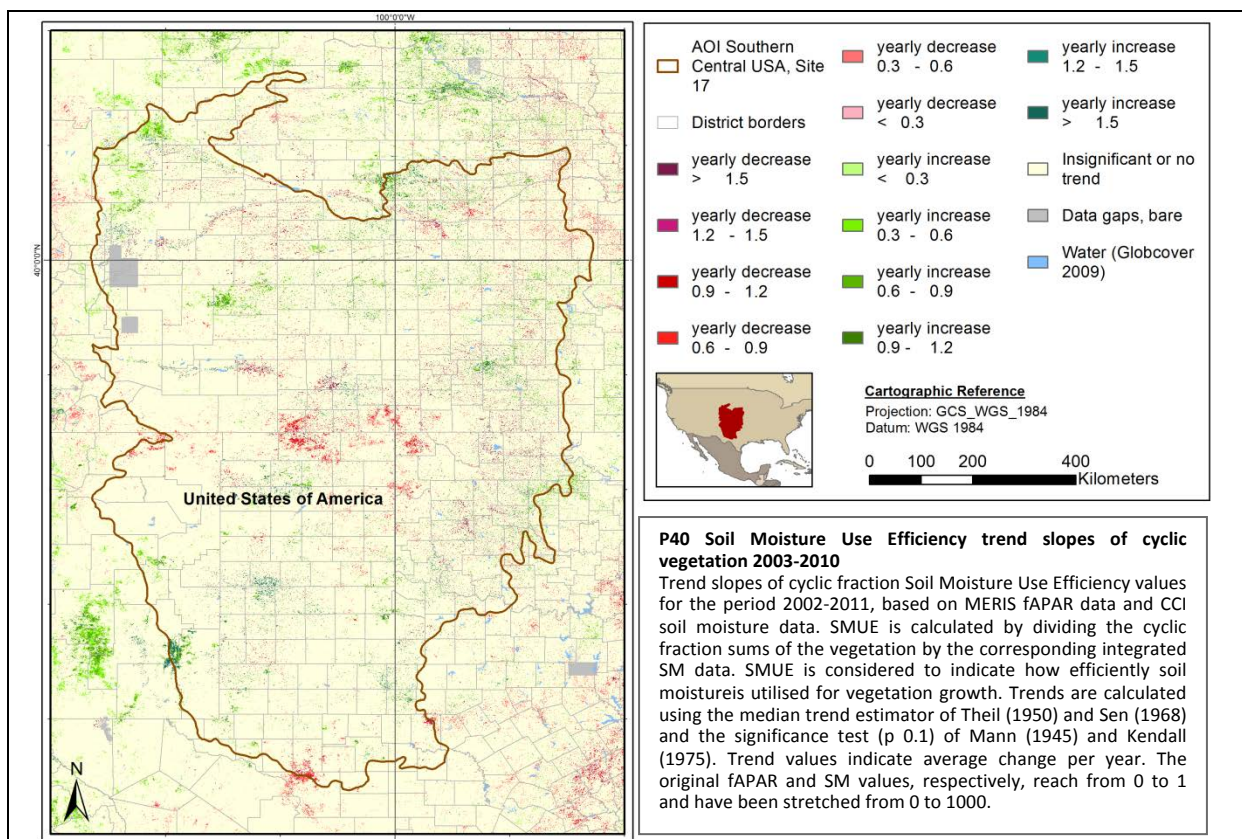




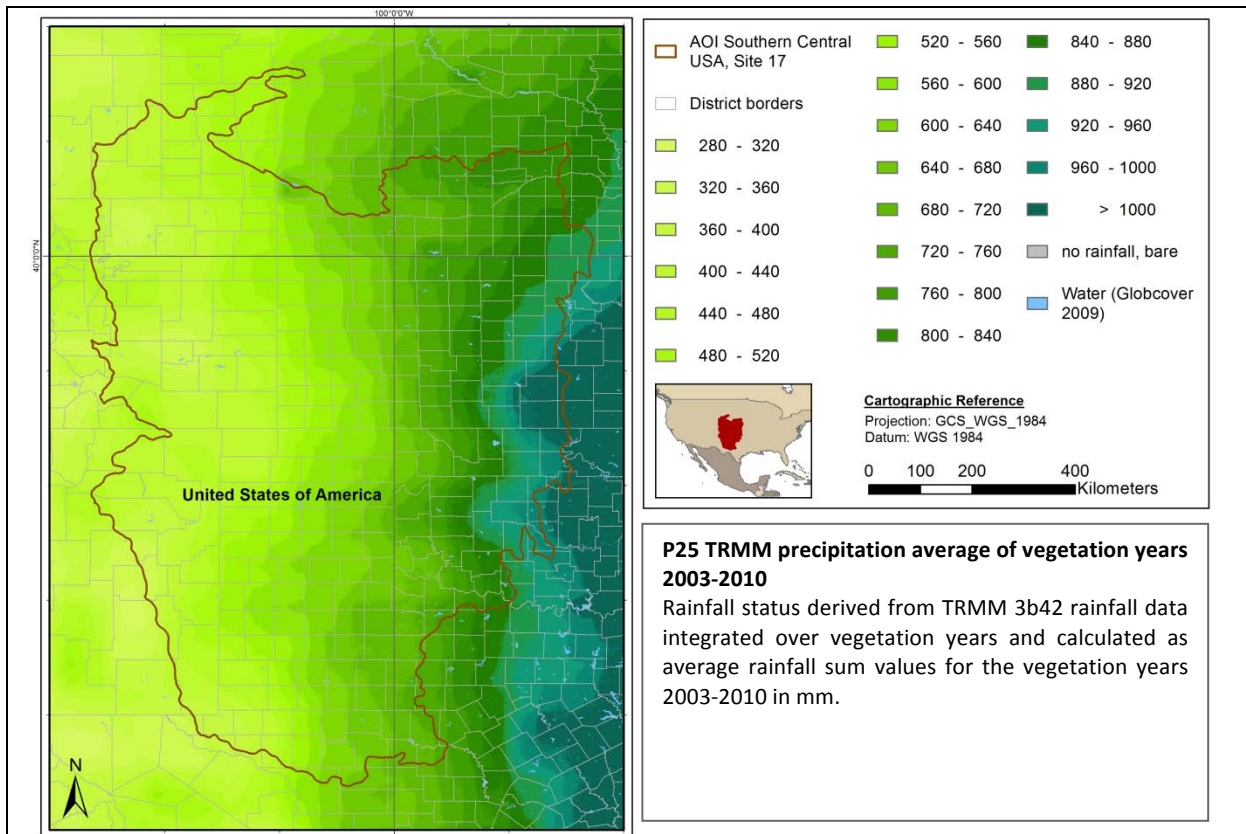
## P37 Rain Use Efficiency trend slopes of cyclic vegetation 2003-2010



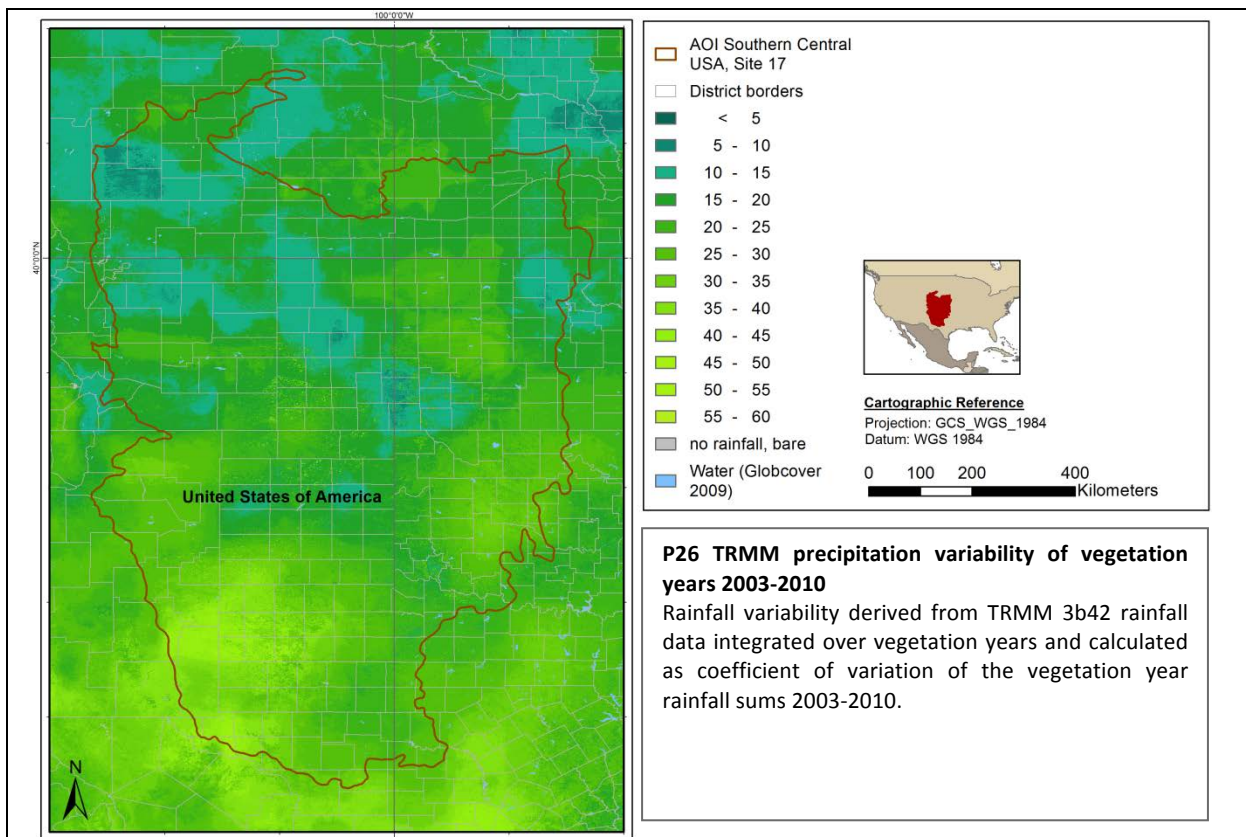
## P40 Soil Moisture Use Efficiency trend slopes of cyclic vegetation 2003-2010



## P25 TRMM precipitation average of vegetation years 2003-2010

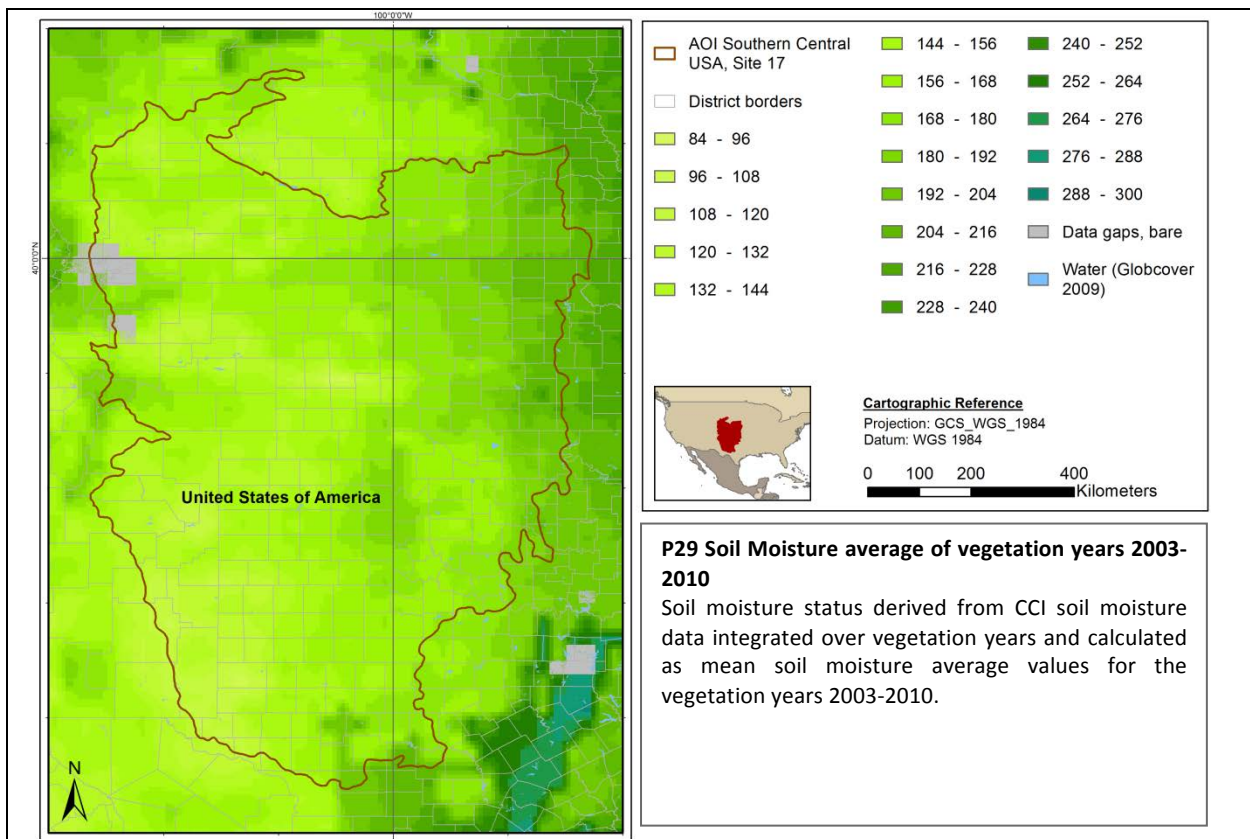


## P26 TRMM precipitation variability of vegetation years 2003-2010

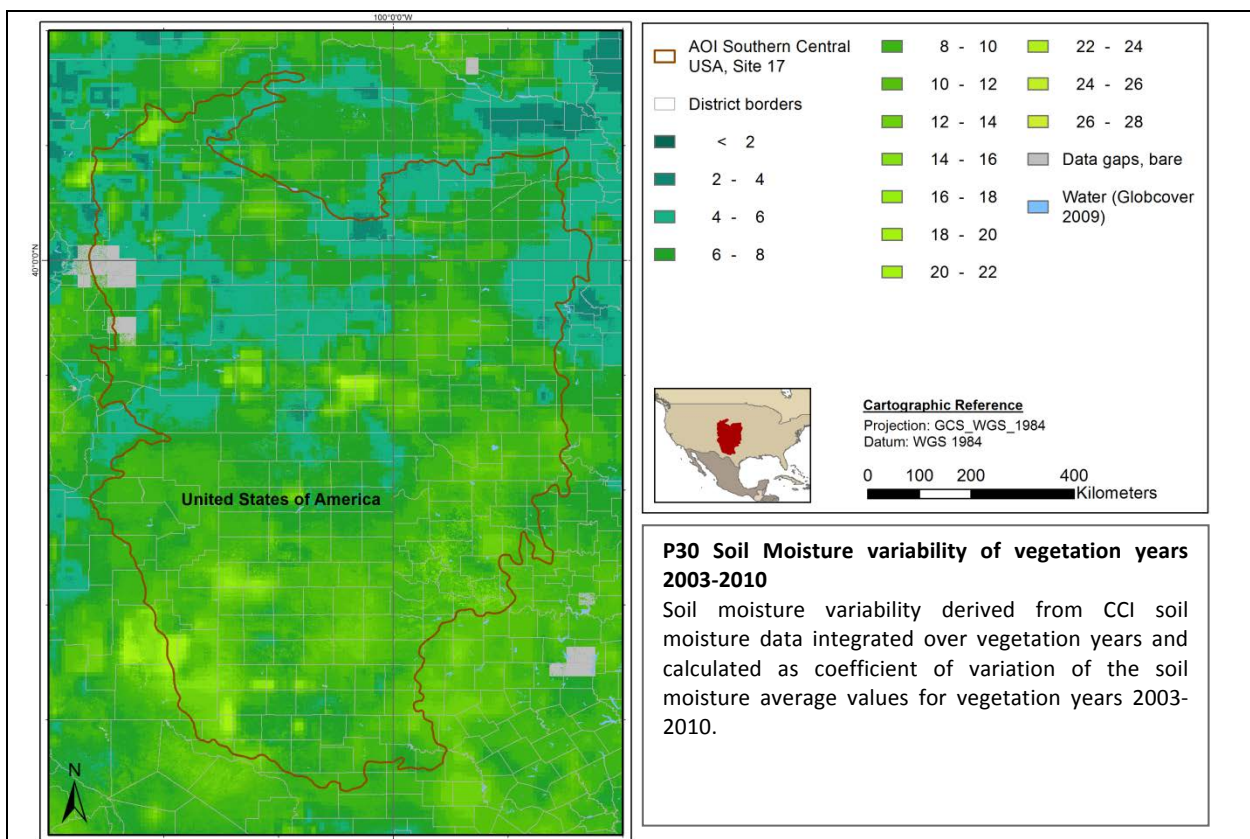




## P29 Soil Moisture average of vegetation years 2003-2010



## P30 Soil Moisture variability of vegetation years 2003-2010



## 5 Generic Interpretation of the Maps

While vegetation productivity obviously follows the rainfall gradients at the large scale (not considering temperature and radiation differences), the smaller scale differentiations exhibit the presence of further influences on vegetation growth at more local scales. These local and regional factors are especially land use, soil properties, topography, and hydrology and include also the protection status of areas. For instance many linear features with (mostly) higher NPP proxy and RUE values than their surroundings can be related to river valleys (often with only seasonal or ephemeral surface water).

Biomes with rich floristic biodiversity may be expected to exhibit higher NPP response to rainfall throughout the year as diverse plant communities may be characterised by a high phenological variability with optimised water exploitation. An example with an extended area of extraordinary high average RUE conditions is the Succulent Karoo biome in South Africa (*"The Succulent Karoo is notable for the world's richest flora of succulent plants, and harbours about one-third of the world's approximately 10,000 succulent species"* [http://en.wikipedia.org/wiki/Succulent\\_Karoo](http://en.wikipedia.org/wiki/Succulent_Karoo) ). The same area is also characterised by an extended length of the green season (compared to areas with similar yearly rainfall), and a winter rain regime. Thus, phenological maps reveal important ecosystem conditions and gradients.

The differentiation of the NPP and RUE indicators into phenological periods helps diagnose the seasonal behaviour of the vegetation and thus provides clues about the presence and dominance of evergreen perennial vegetation versus annual vegetation (e.g. annual grasses, most crops). Accordingly, changes and trends of the phenological vegetation behaviour can be used as indicators for developments such as land use change and land cover change. For instance the worldwide observed phenomenon of bush encroachment (woody encroachment, woody thickening) in drylands (Ratajczak et al. 2011) will lead to a shift of vegetation phenology, where especially an increase of dry season greenness, possibly, but not necessarily combined with a decrease of the cyclic greenness can be expected.

Bush encroachment in range lands is largely perceived as negative development, where the bushes lead to range land degradation by reducing grass cover and impeding the access of cattle to the remaining grass. Also impoverishment of biodiversity was frequently found as an effect of bush encroachment (Ratajczak et al. 2011). The greening trends especially in the dry season are indeed a widespread phenomenon in the derived NPP proxy maps, possibly pointing to continued bush encroachment or enhanced growth and greening of existing bushes, partly related to rainfall increases. Pronounced dry season greening may also be caused by the plantation of (especially evergreen) woody plants and forests. In case of greening trends related to commercial forest plantations, the trends can also be interpreted as a biodiversity loss.

Several indicators for the "classical" land degradation, i.e. the decrease of vegetation productivity in relation to available water have been derived in Diversity II. They include RUE and SMUE, where the latter is based on soil moisture, which is more directly reflecting available water in the root zone than rainfall. Often, RUE and SMUE exhibit different results, which is the logical consequence of the differences between the rainfall and the soil moisture data used. However, negative RUE trends are widely disputed as indicator for land degradation, mainly because RUE has been found to not consistently normalise for rainfall variability. Also the alternative RESTREND method has been challenged for this purpose (e.g. Wessels et al. 2012, Ratzmann 2014). In addition to their weaknesses related to invalid assumptions, they are lumped indicators, which do not detangle the individual developments of water availability and vegetation production. The proposed second order indicators, on the other hand (see maps P53 to [P56](#)), show both rainfall (or alternatively soil moisture) trends and NPP trends separately and synoptically.

RUE or SMUE changes and trends may be as well related to land cover/use/management changes, such as the conversion of rangeland into cropland, deforestation, etc. Especially processes such as



urbanisation or mining will lead to extreme NPP proxy and RUE decreases. Phenology helps to detangle some of the trends: for instance the clearing of shrubs, bushes and trees (e.g. for the conversion of rangeland into crop land) can be expected to lead especially to dry season NPP and RUE decreases. On the other hand, the frequently found greening trends in the dry season, at first glance positive trends, may even be primarily related to adverse processes such as bush encroachment. However, caution is also necessary in this respect, as also range land improvement and tree planting activities may lead to positive NPP and RUE or SMUE trends.

The derived indicators should not be directly interpreted in terms of land condition, degradation or respectively land improvement. They provide useful base information, especially when combined, but there is no single “all in one” indicator about land condition and trends. In situ knowledge about biophysical and socio-economic factors and systems (including past and present land tenure and land use practices, history of land degradation, population pressure, current policies and economic developments, etc.) is indispensable for an appropriate assessment of status, trends, and possible future developments.

Finally, the observation period is rather short, which basically hampers conclusions from derived trends. The variability of rainfalls and subsequently vegetation greenness from year to year is so significant in drylands that it certainly hides trends, which in such a short period may be rare and not very pronounced. Trends must pass certain statistical significance threshold (which has been set to 0.9 and thus relatively low in this project) to be recognised as significant trends. There may be more relevant and persistent changes going on than the trend maps for such a short period can show, and abrupt change events cannot be expected to exhibit gradual indicator developments and measurable trends. The rainfall trend maps for instance show hardly any significant trends, while the rainfall change map between the two epochs shows large positive and negative change regions with partly big epochal rainfall differences. Vice versa, due to the short observation period, measured significant trends may not really be part of persistent, longer term development but may already be reversed in the next epoch.

The meteorological and other environmental data used play also a significant role especially for the generation of the RUE and SMUE indicators. Compared to the MERIS data with 300m ground resolution, these datasets are extremely coarse and especially with regard to the soil moisture data by far not representative for the scale of local variability at the MERIS resolution.

For these reasons the eight vegetation years covered worldwide by MERIS are perhaps better suited for an overall assessment of the ecosystem structures and conditions, where the phenological characterisation of vegetation trends may provide hints about ecosystem functions and biodiversity. While many of the variations in vegetation production and productivity in drylands are short and medium term responses to varying water availability, the seasonal type of these responses may be taken as valuable information towards this aim.

## **6 Outlook**

The provided indicators and – if requested – the underlying continuous data can be utilised to many more analyses than those performed in the Diversity II project. Interested users may contact us for further information what else besides the project downloads has been produced in the project, or which further possibilities may exist to deepen or extend the studies.

The applied methods for the extraction of phenological and vegetation productivity parameters can be used for other sensors, such as the upcoming Sentinel 2 and especially Sentinel 3 of the ESA Copernicus program, which will be the successor of the ENVISAT MERIS data. Also SPOT Vegetation, MODIS, or Proba-V data can serve to extend the analyses of this study by applying at least the same methodology, if the data are certainly not fully comparable. Bridging the data gap between MERIS and Sentinel 3 with its first planned launch in 2015 may be achieved this way.

## **7 Outlook**

The provided indicators and – if requested – the underlying continuous data can be utilised to many more analyses than those performed in the Diversity II project. Interested users may contact us for further information what else besides the project downloads has been produced in the project, or which further possibilities may exist to deepen or extend the studies.

The applied methods for the extraction of phenological and vegetation productivity parameters can be used for other sensors, such as the upcoming Sentinel 2 and especially Sentinel 3 of the ESA Copernicus program, which will be the successor of the ENVISAT MERIS data. Also SPOT Vegetation, MODIS, or Proba-V data can serve to extend the analyses of this study by applying at least the same methodology, if the data are certainly not fully comparable. Bridging the data gap between MERIS and Sentinel 3 with its first planned launch in 2015 may be achieved this way.

## References

- Gobron N. (1999), Envisat's Medium Resolution Imaging Spectrometer (MERIS) Algorithm Theoretical Basis Document: FAPAR and Rectified Channels over Terrestrial Surfaces. JRC Scientific and Technical Reports.
- Le Hou  rou, H.N. (1984), Rain use efficiency: a unifying concept in arid-land ecology. *Journal of Arid Environments*, 7, 213-247.
- Fensholt, R., Rasmussen, K., Kaspersen, P., Huber, S., Horion, S., Swinnen, E. (2013), Assessing Land Degradation/Recovery in the African Sahel from Long-Term Earth Observation Based Primary Productivity and Precipitation Relationships. *Remote Sensing*, 5, 664-686.
- Kendall, M.G. (1962), *Rank Correlation Methods*, Charles Griffin and Company, London.
- Mann, H.B. (1945), Non-parametric tests against trend. *Econometrica*, 13, 163-171.
- Ratajczak, Z., Nippert, J.B. and Scott, L. (2011), The effects of woody encroachment on plant diversity in global grasslands and savannas: a meta-analysis. [http://media.wix.com/ugd/d270f9\\_013ee3e8ed68377da3047468fb523488.pdf](http://media.wix.com/ugd/d270f9_013ee3e8ed68377da3047468fb523488.pdf).
- Ratzmann, G. (2014), EO-based Relationships Between Vegetation and Rainfall in Drylands. Towards better understanding of eco-hydrological patterns and dynamics. Master's thesis at the Faculty of Science , University of Copenhagen.
- Sen, P. K. (1968), Estimates of regression coefficients based on Kendall's tau. *J. Amer. Statist. Assoc.*, 63, 1379–1389.
- Theil, H. (1950), A rank-invariant method of linear and polynomial regression analysis I, II and III, *Nederl. Akad. Wetensch. Proc.*, 53, 386–392, 521–525, 1397–1412.
- Wessels, K.J., Van den Bergh, F., Scholes, R.J. (2012), Limits to detectability of land degradation by trend analysis of vegetation index data. *Remote Sensing of Environment*, 125, 10–22.

All Drylands Booklets are available on [www.diversity2.info](http://www.diversity2.info)

Publisher	ESA Diversity II project
Editor	Ute Gangkofner (GeoVille, Austria)
Cover Design	ESA - EOGB (Earth Observation Graphic Bureau)
Copyright	© 2015 ESA Diversity II project



## ESA DIVERSITY II PROJECT TEAM

### **European Space Agency**

Project requirement definition; user interface;  
EO data provision; project control

### **Brockmann Consult GmbH, Germany**

Prime contractor; project management; algorithms  
for preprocessing including atmospheric correction  
over land and lakes; software and production

### **GeoVille Information Systems GmbH**

Drylands requirements analysis; algorithms  
for drylands; software and production

### **Brockmann Geomatics AB, Sweden**

Biodiversity and user interface; algorithms for water  
quality retrieval and lake indicators; website; web GIS;  
communication and outreach

### **Research Centre in Biodiversity and Genetic Resources CIBIO, Portugal**

User requirements engineering; product validation;  
biodiversity assessment

### **Consultants**

Rasmus Fensholt (Uni Copenhagen)  
Kurt Günther (DLR)

Editing Author: Ute Gangkofner